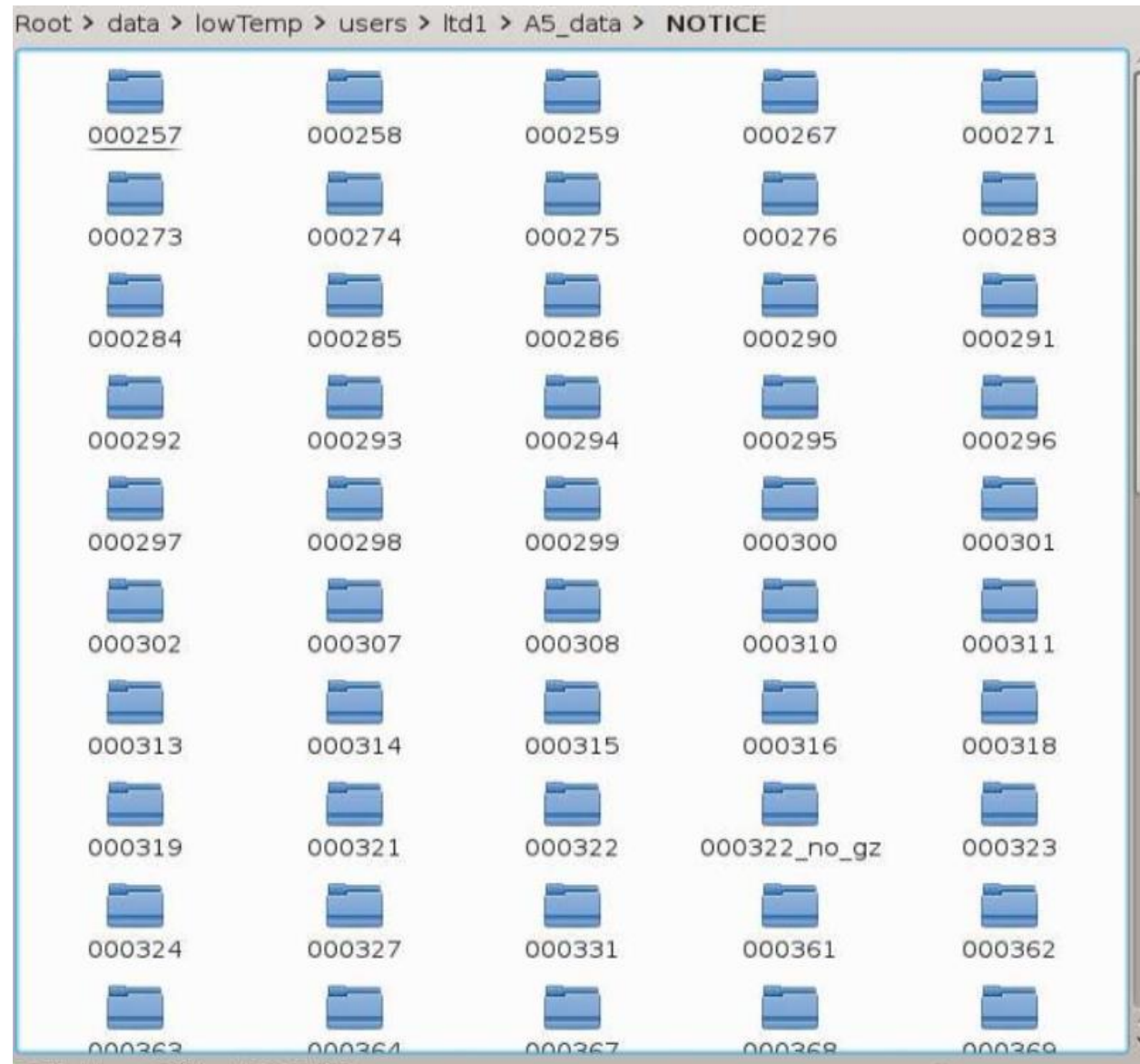


Weekly Report

2019-02-18

Kim, Hanbeom

AMoRE Pilot Data

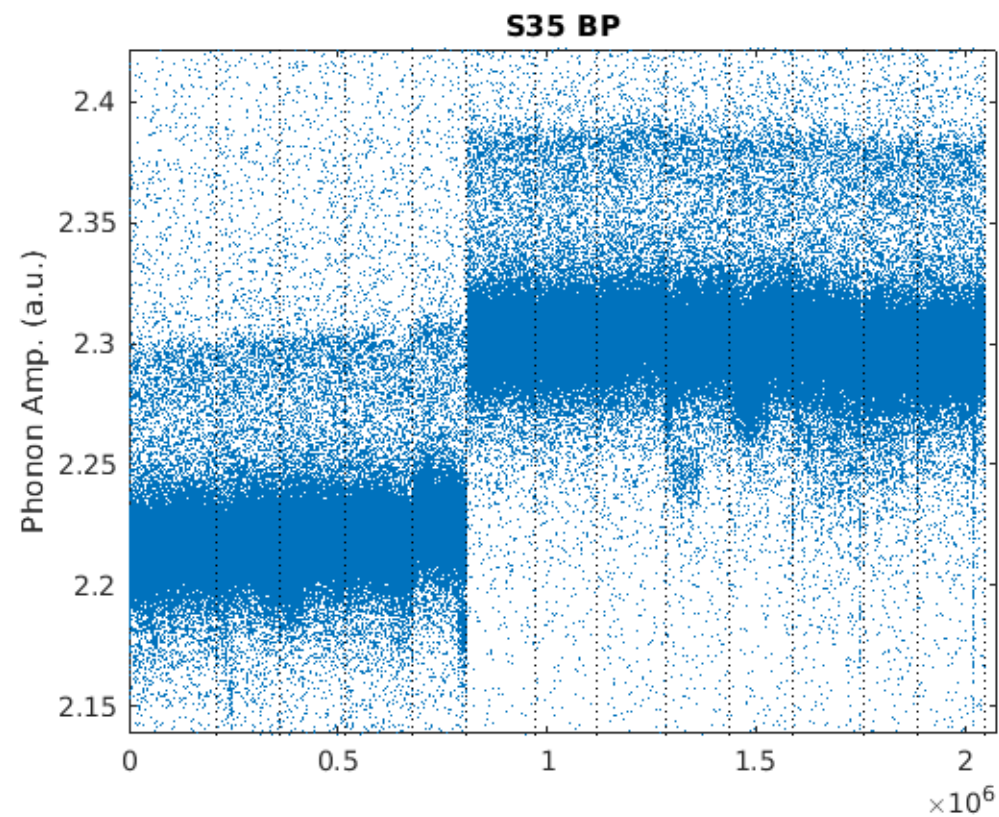
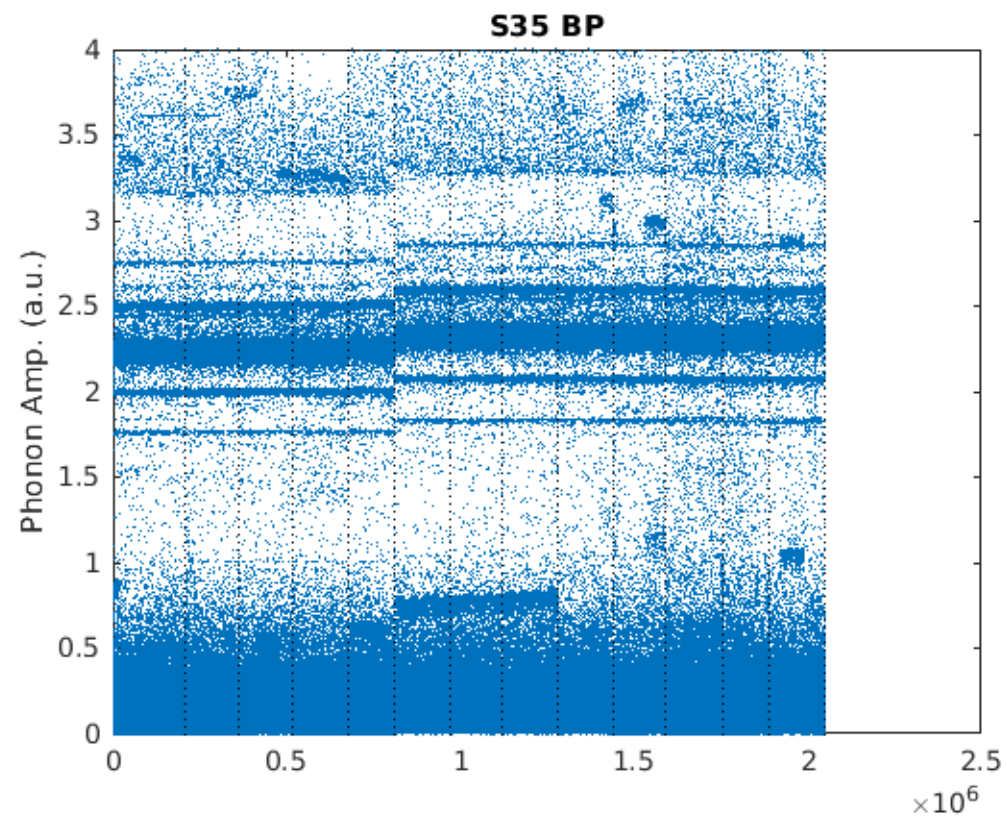


Pilot 5: ~ run 360
Pilot 6: run 361~

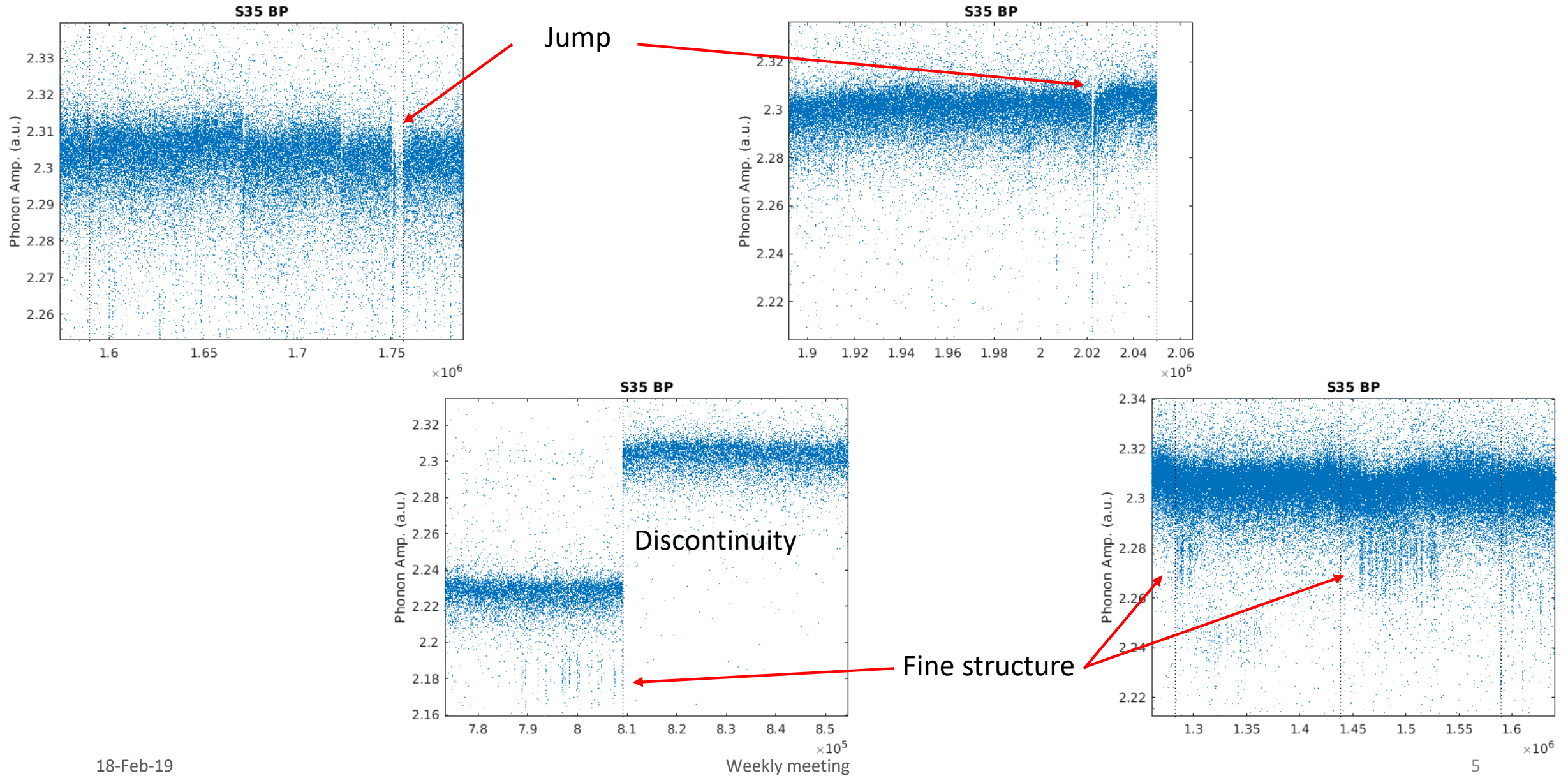
AMoRE Pilot Data

- Run # [258 271 274 276 284 286 291 293 295 297 299 301 308]
- Crystal # 2 (S35), 4 (SE01), 6 (SE02)
- While S35 have more than 2 million events, other two have about 400,000 for each.

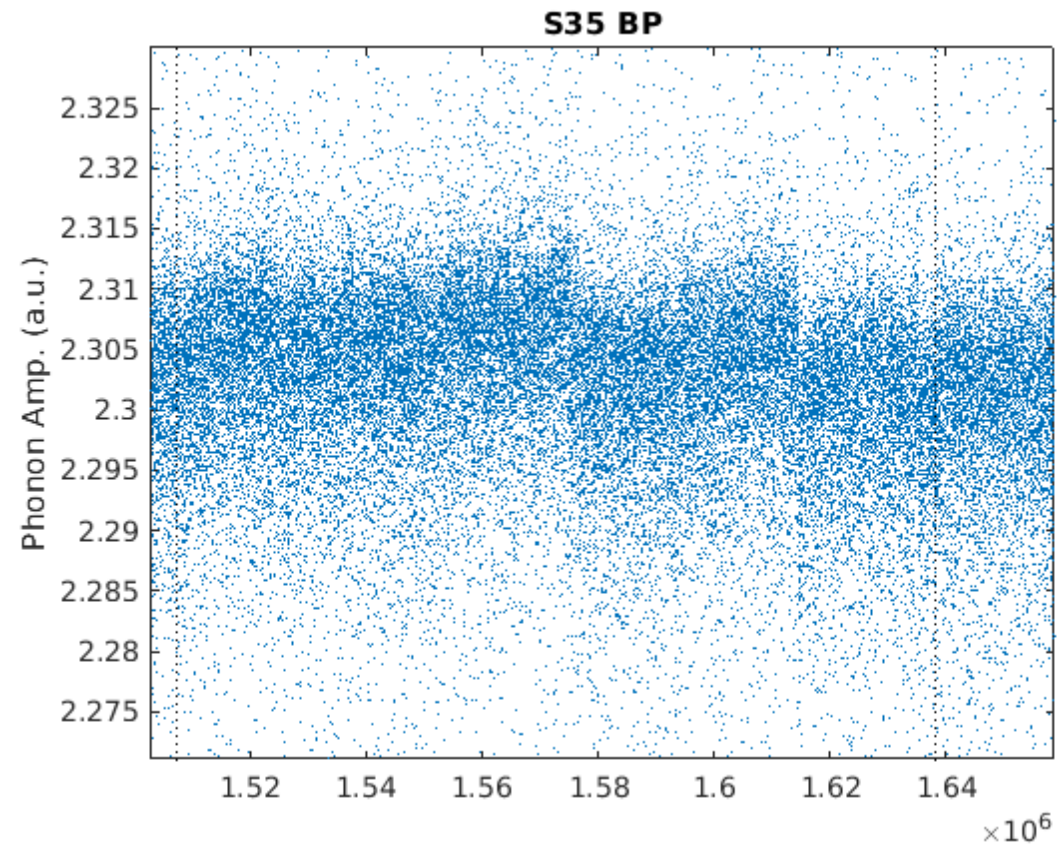
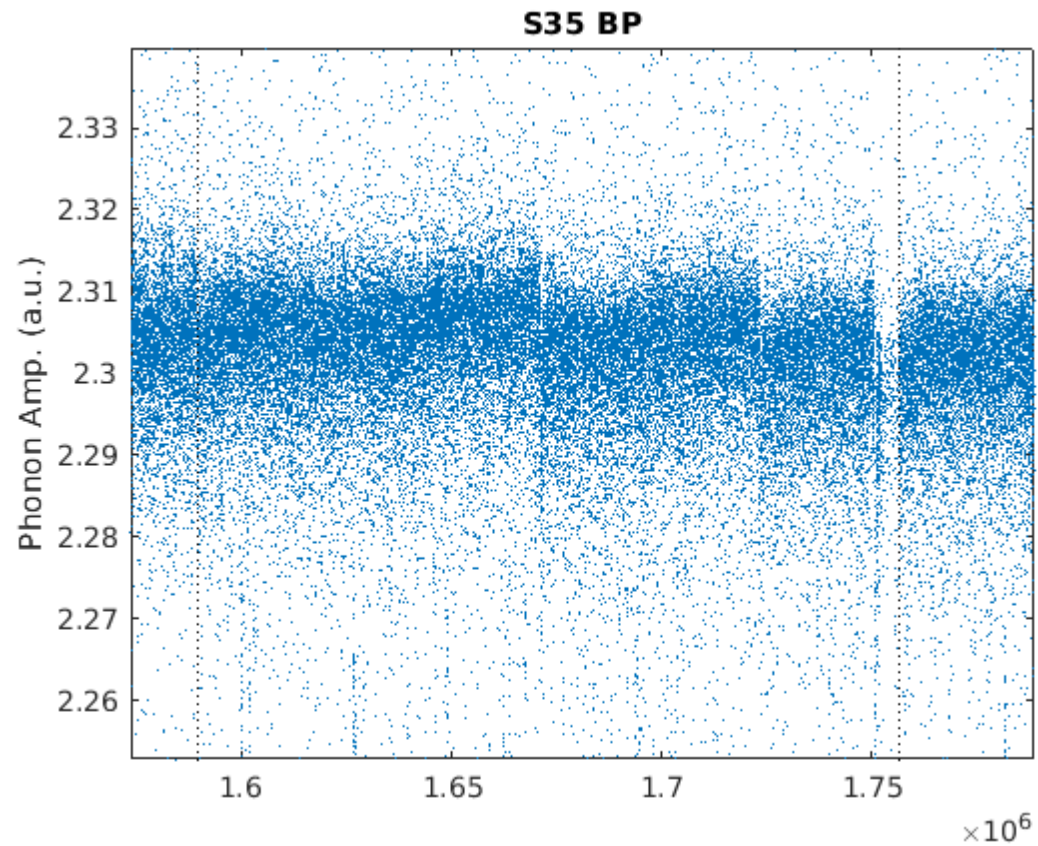
Amplitude modification (S35)



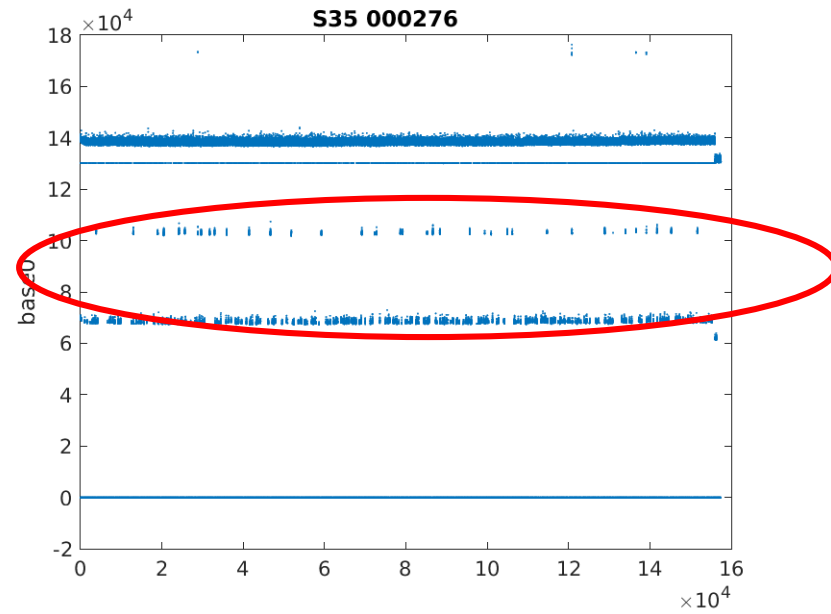
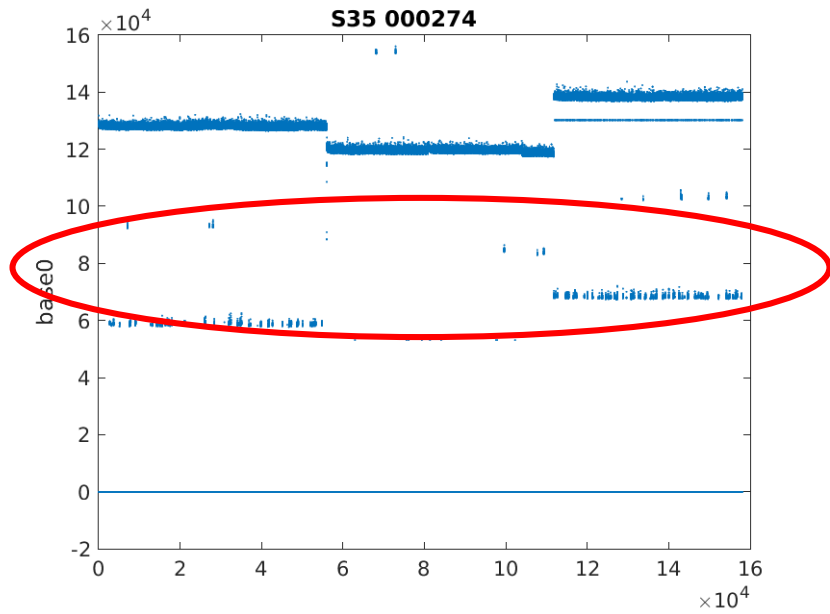
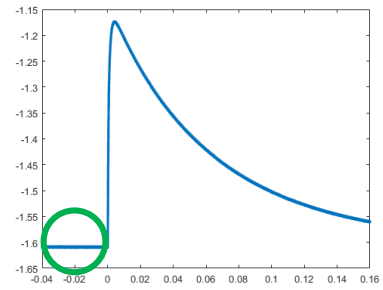
Amplitude modification (S35)



Index cut



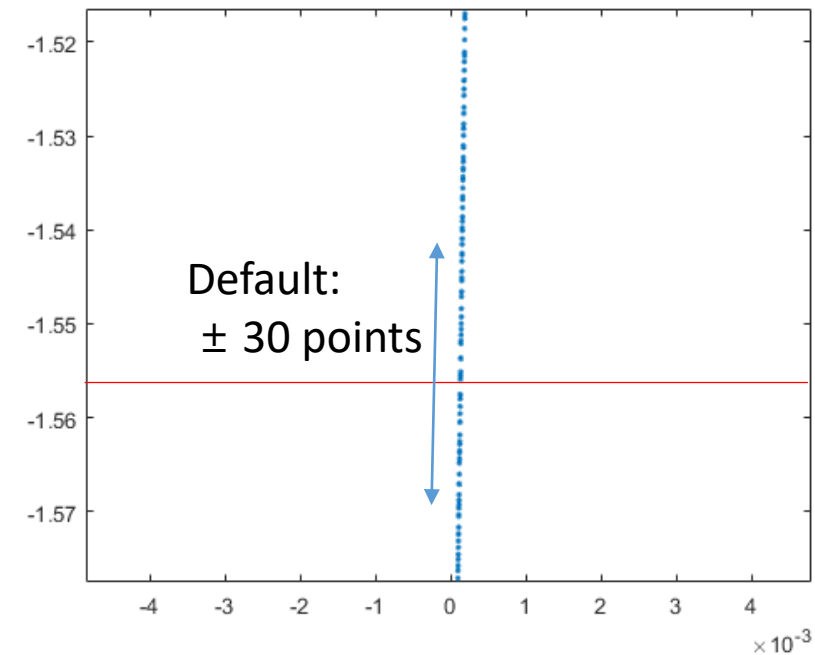
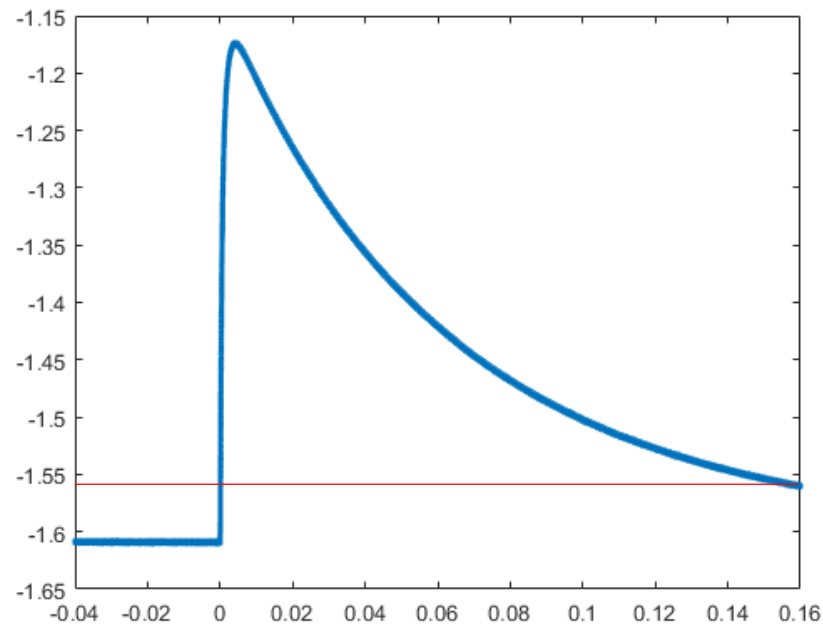
Base cut



Produces fine structure

Determination of signal parameters

- t10: the time when pulse height becomes 10% of maximum pulse height
- Use 1st order polynomial fitting



Determination of signal parameters

- mean/center: the meantime of the signal (calculated with integration)
- Integration range: from 1% before trigger ($t=0$) to an artificial instant (default = $1/3$ after trigger)

