

# Magnet @ CERN

191115

박관형

# Straight nozzle

- 3) Determine which is the system leg of the siphon. The point of cryostat leg needed a straight nozzle and pushing it downwards until it reaches the solid cone. The other leg, with the extension fitted, should now be inserted slowly into the storage dewar.

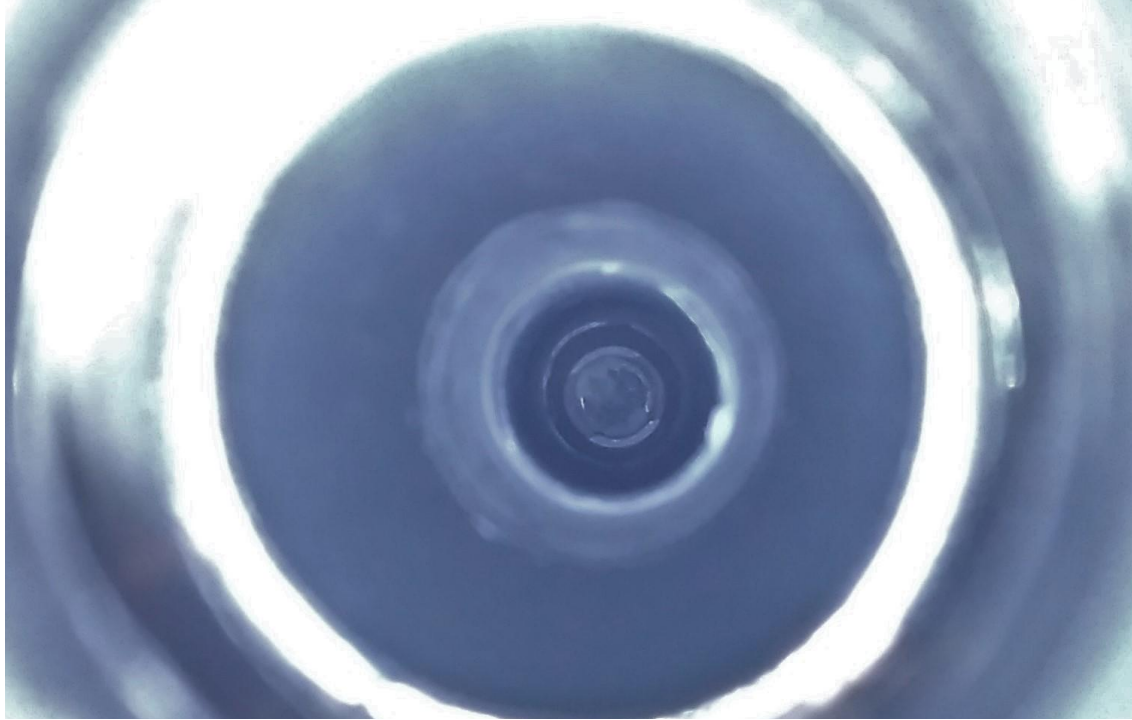


ITEM ⑦  
(8-1:2)

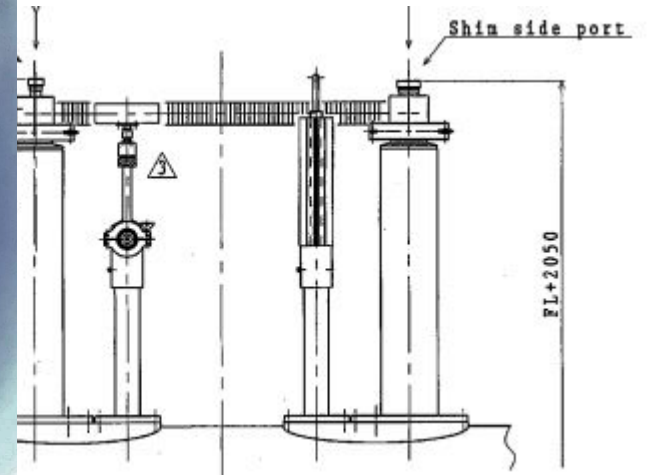


Same outer diameter  
with blow-out tube

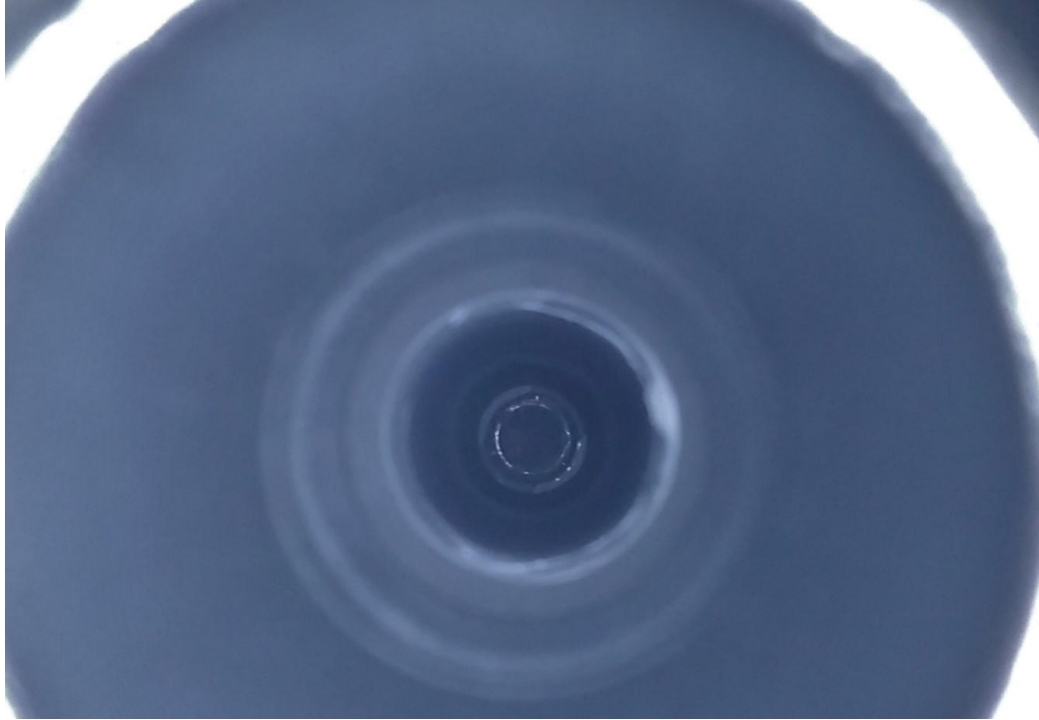
# Magnet Shim connection-After N2 flushing



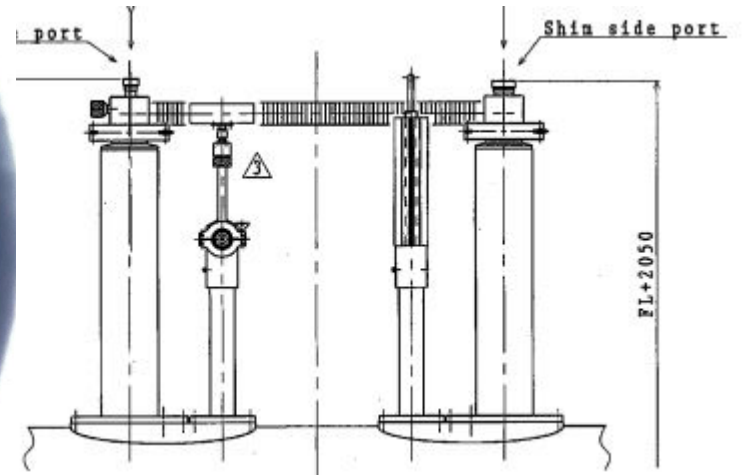
Temperature: 87 K



# Magnet Shim connection



Temperature: 96 K



# Shim connector



# Plan

- 10:00 Start gas He flushing
- 10:30 Start pumping and flushing with gas he
- 12:00 Start LHe transfer
- 17:00 Start LN2 transfer(tentative)

# Rail for Antiproton Trap