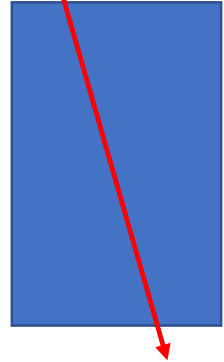


Single track trigger

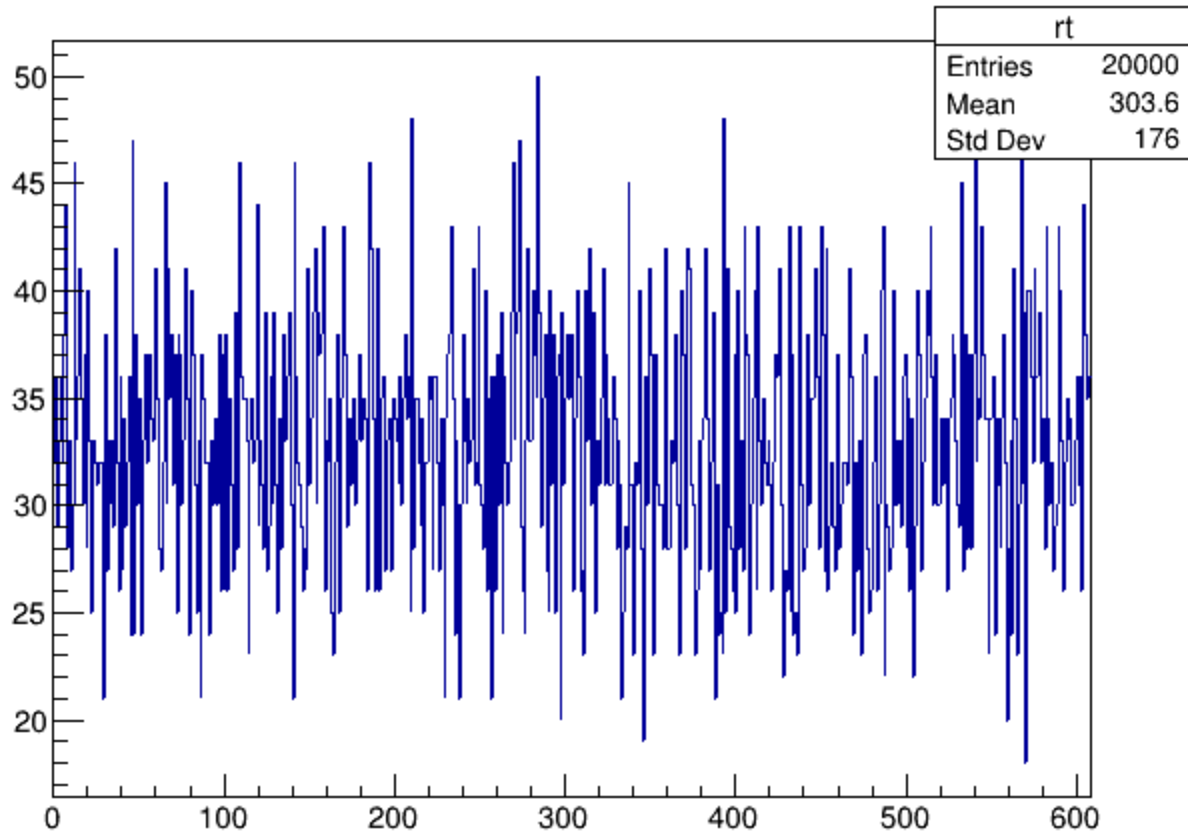
- Test by using cosmic ray
- Compare with MC
- Set only 1 bar.
- Coincidence condition = 2 channel
- Gain adjustment is not fully completed.
- Threshold = 100 [ch]

Single track trigger

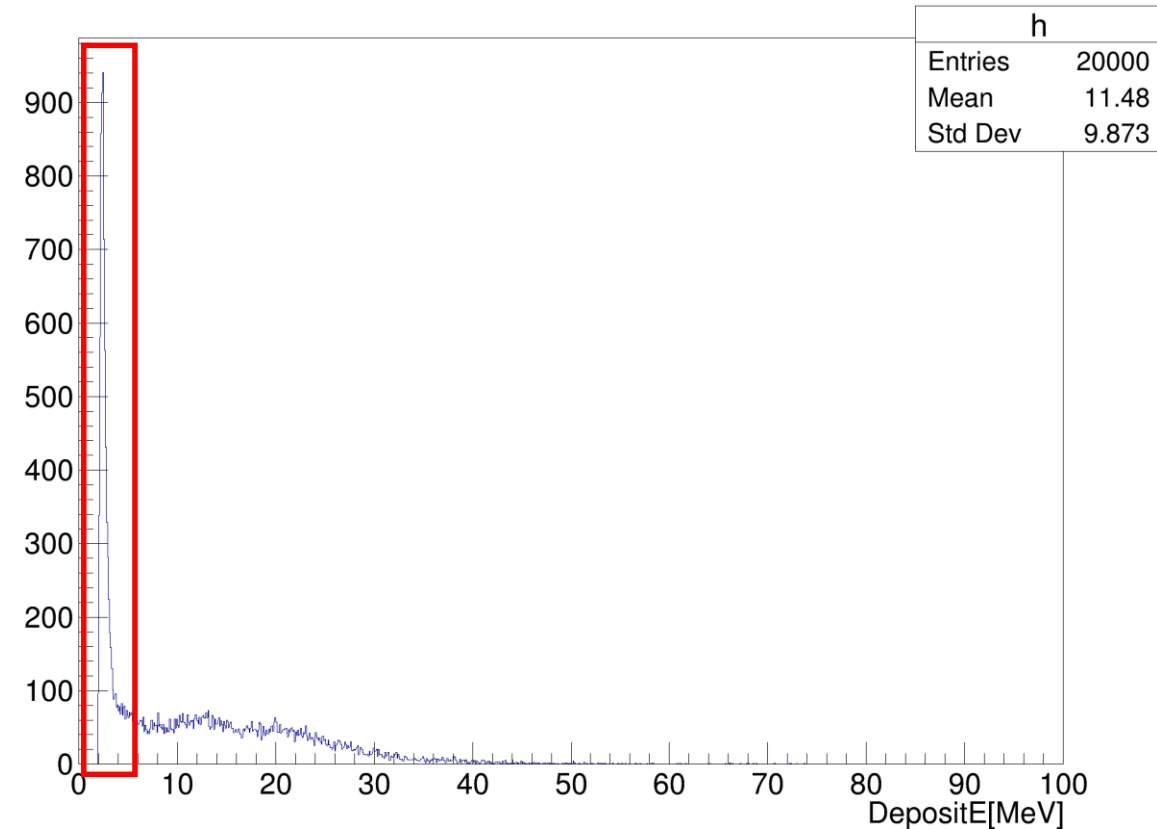
- LR bar trigger rate and height distribution



rt

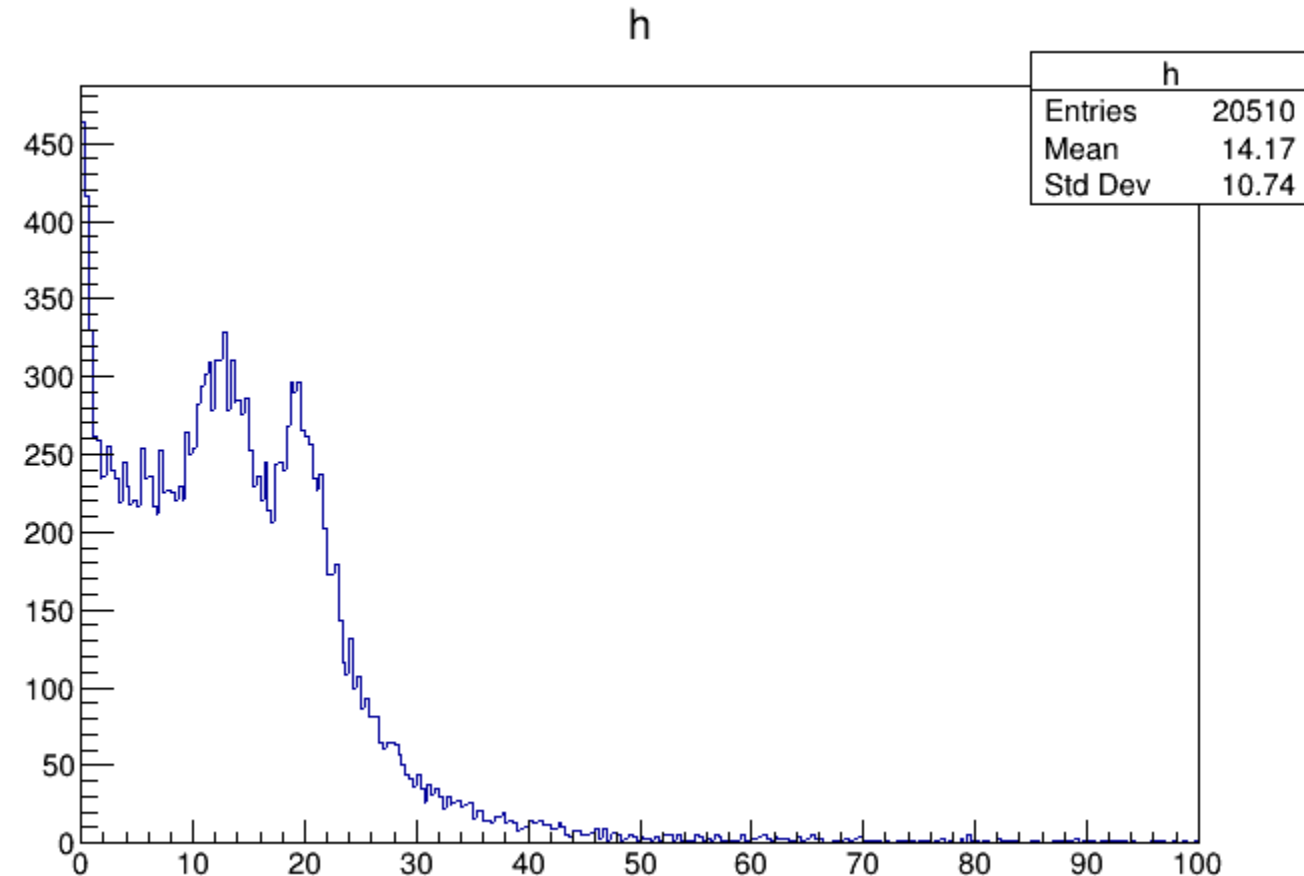
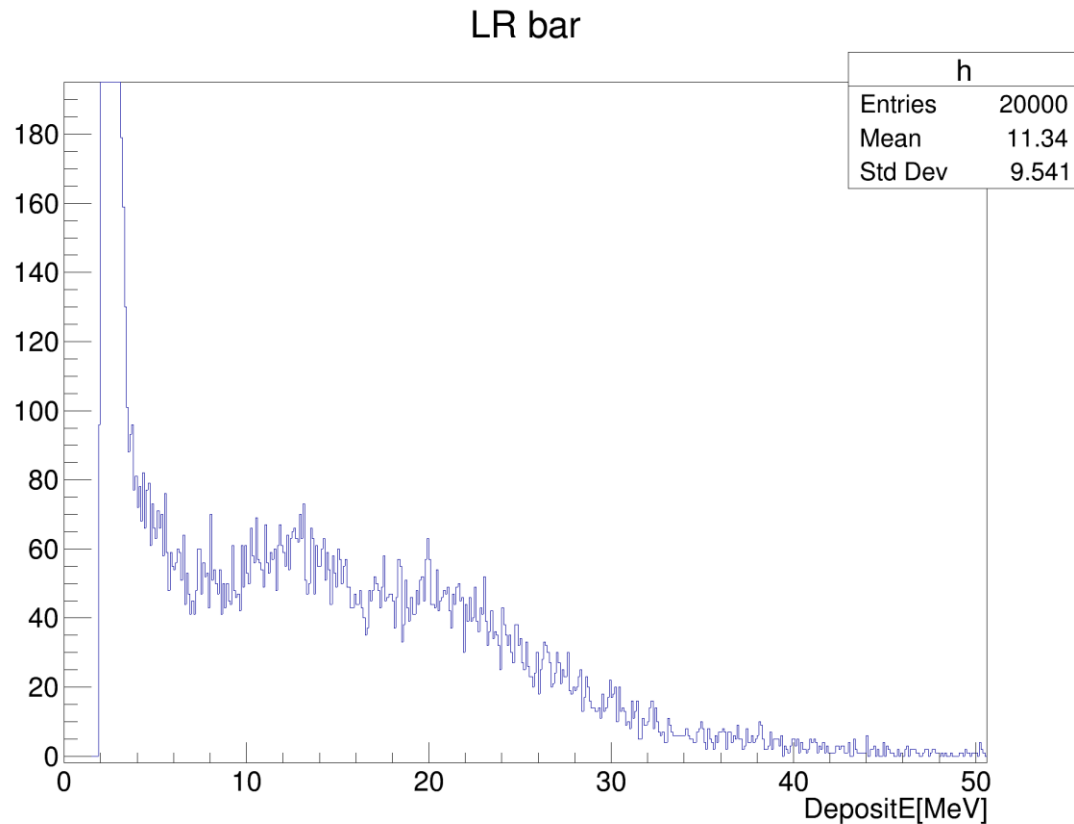


LR bar



Single track trigger

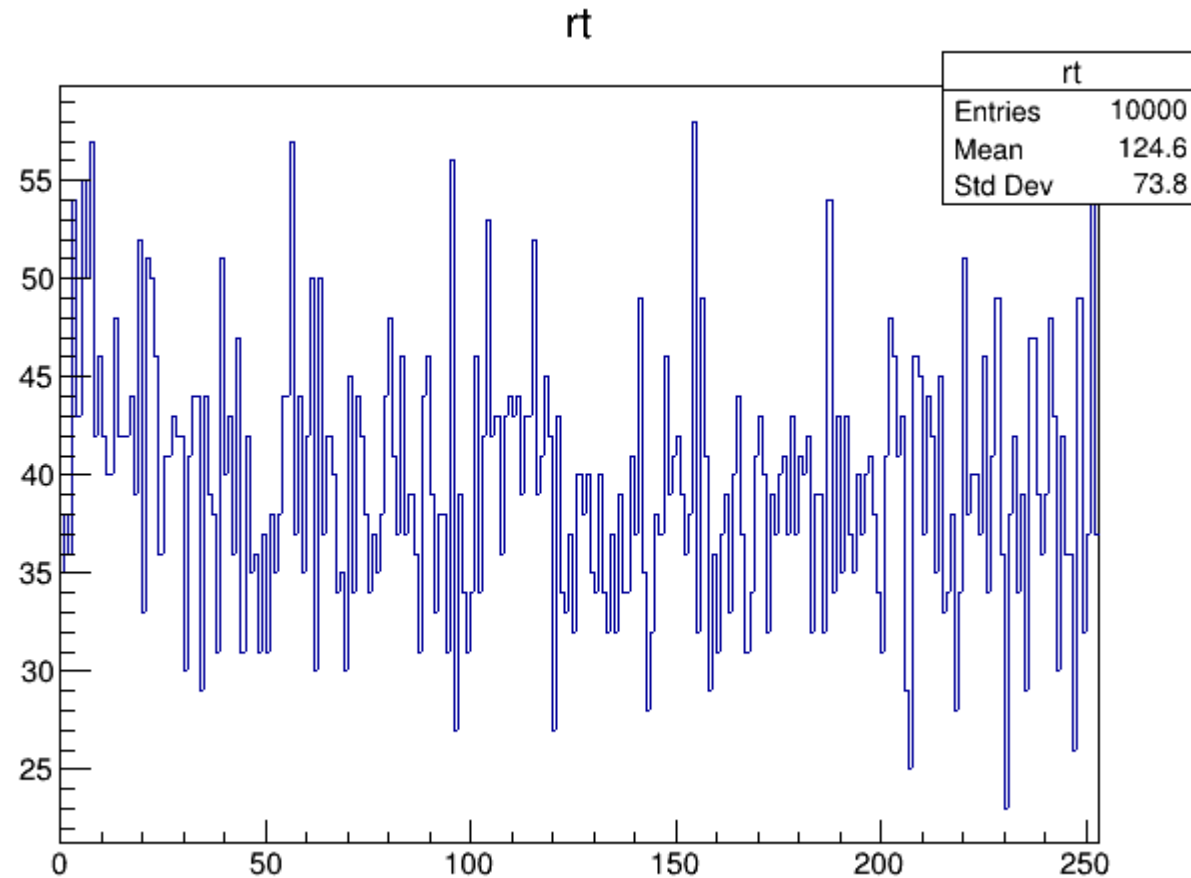
- data(Left), MC(right)
- MC for 1000 second



Single track trigger

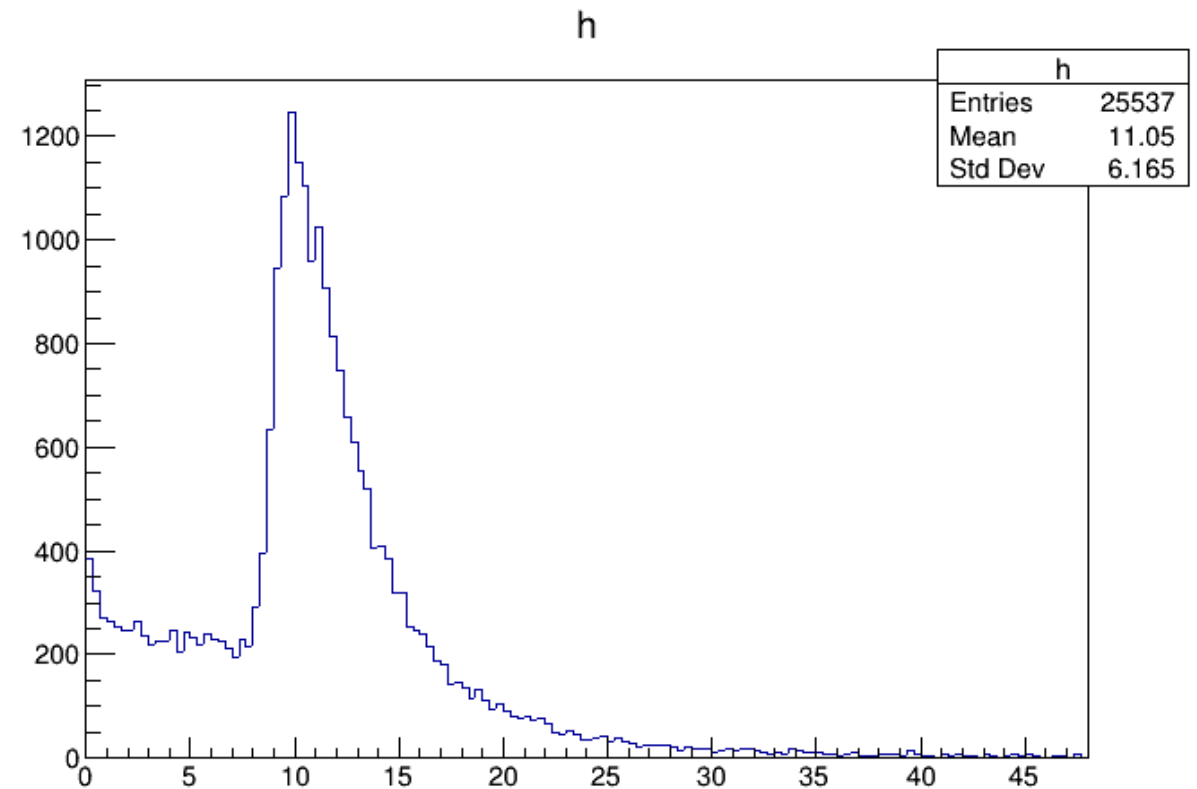
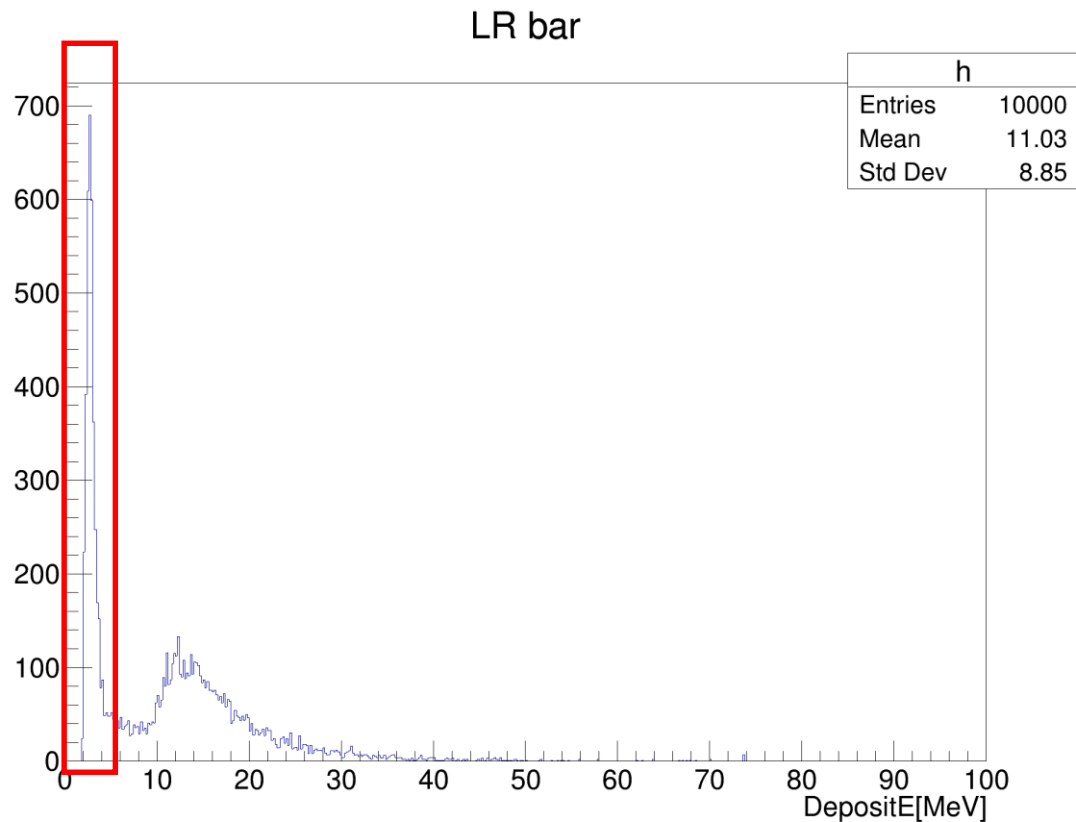


- TB bar trigger rate



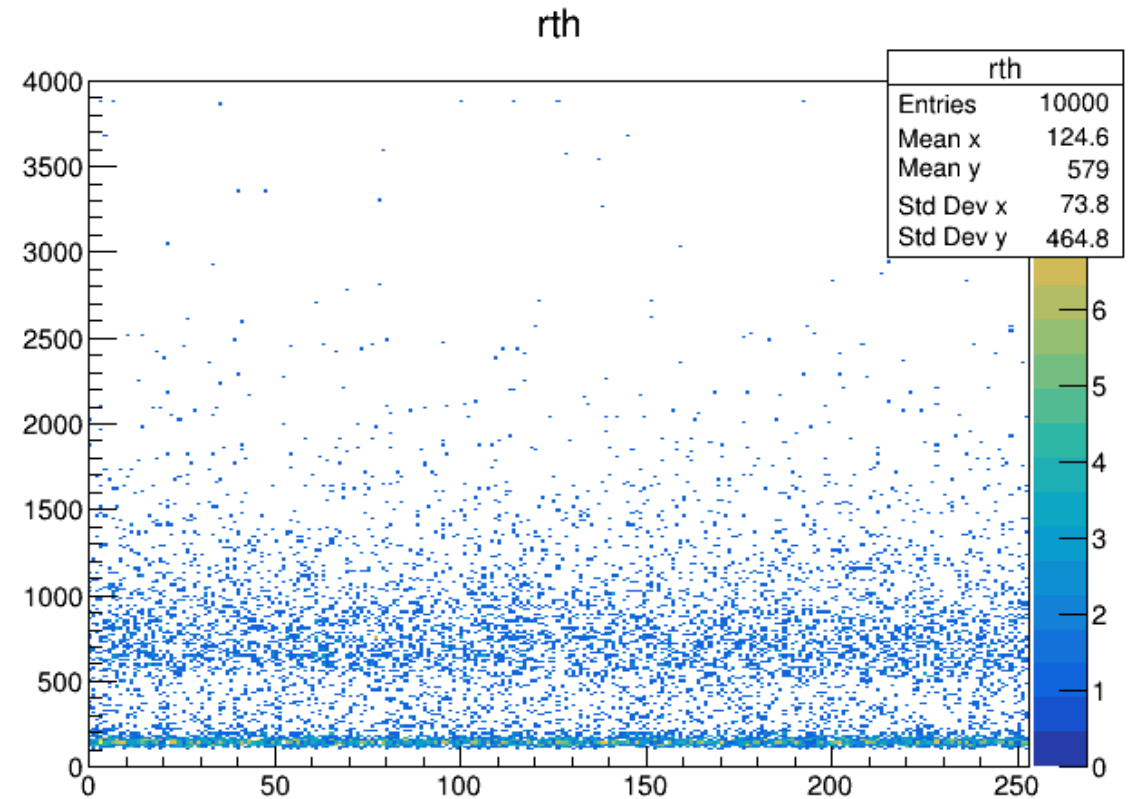
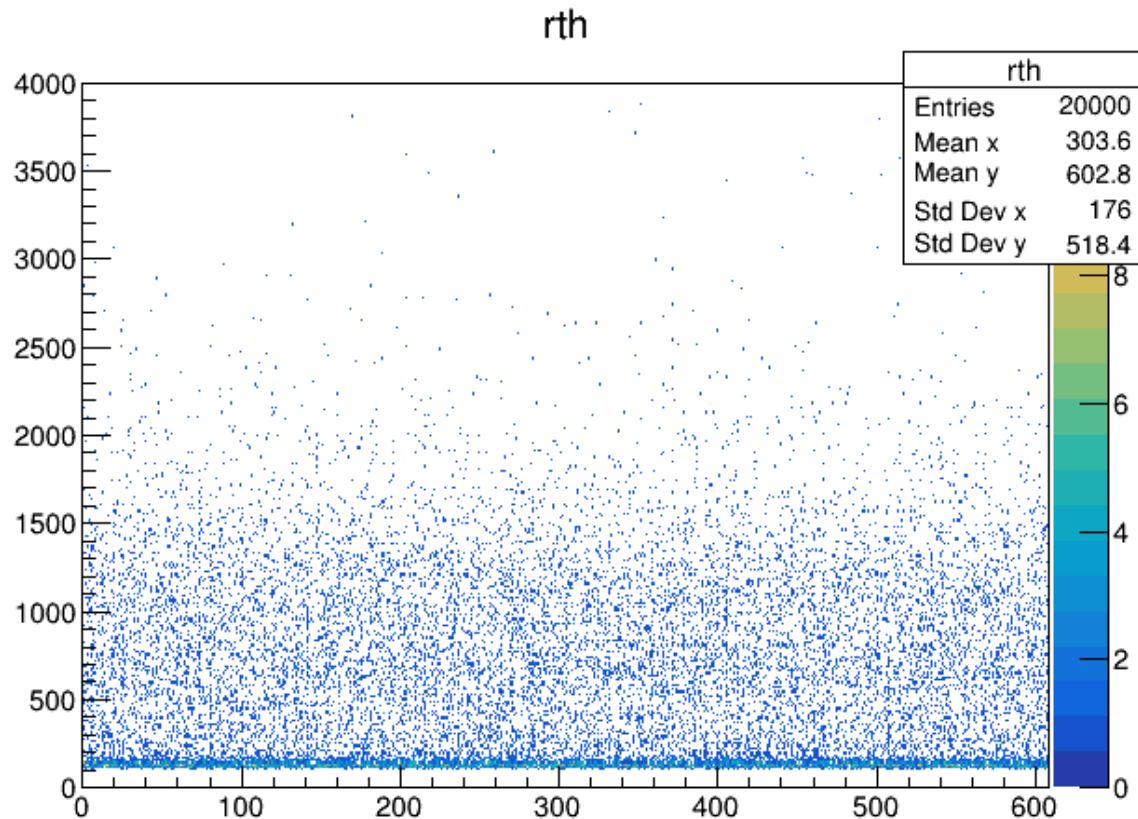
Single track trigger

- data (left) , MC (right)



Trigger time vs height

- LR (left) TB (right)



Single track trigger

- Coincidence window 200ns -> 50ns does not give change of such low energy peak.
- scintillator induced signal?
- CRY also can generate other particles from cosmic ray but their deposit energies are smaller than 0.3MeV
 - > meaningless