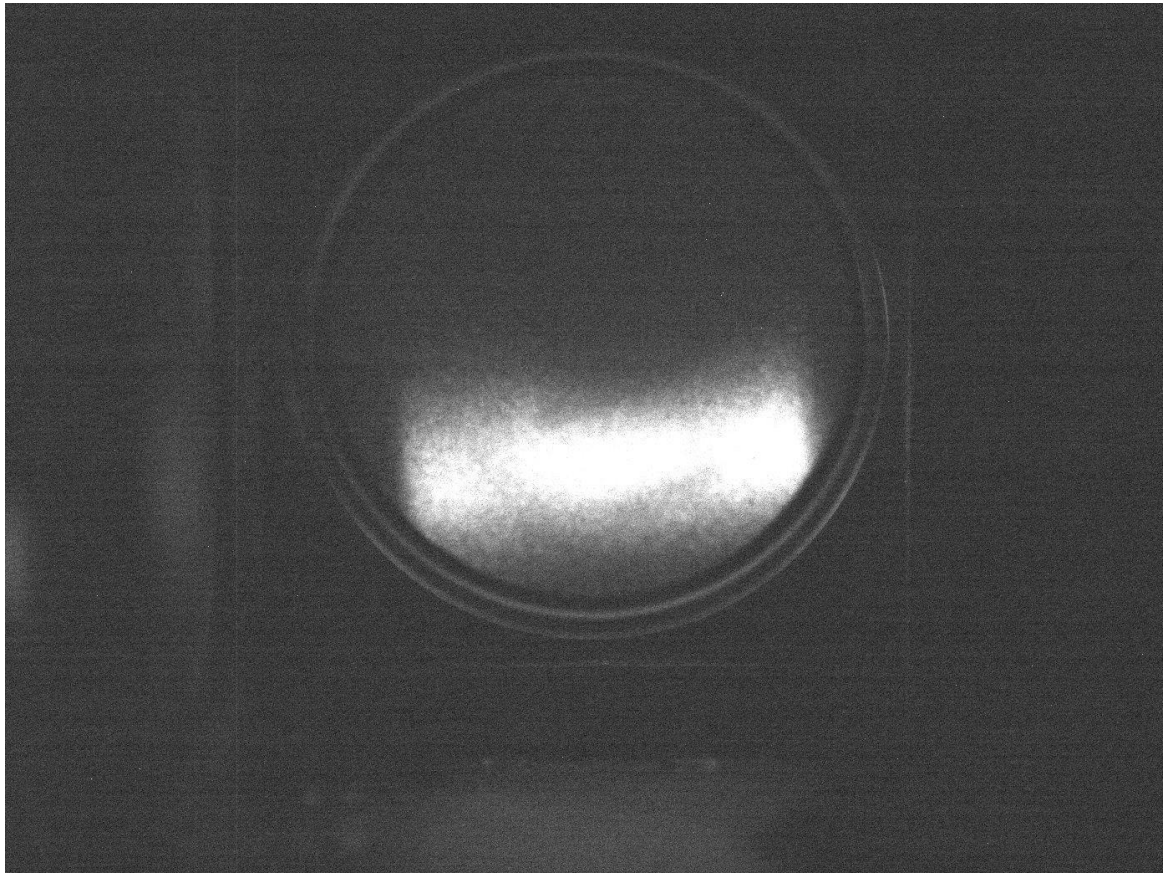


Weekly report

SNU

BongHo Kim

CERN status



- H- beam was measured by MCP as 2D images and electric signal (timing)
- Vertical line is decided by bender's rectangular hole.
- Horizontal focusing looks okay.
- Decelerator HV cage inspection is booked at Wednesday (HV cage) and Thursday (interlock).
- We may can test deceleration in this week by H- beam.

TOF status

- 24 cables with SHV connectors and 24 cables with BNC&SMA are prepared.
- Length of signal cable will be checked by pulse generator today.
- Length of HV cables are same except one cable (1.2m usual and one is 1.5m)
- Because p-bar electron cooler has progress, we may see the beam soon and can measure something by TOF also.

TOF plan

- Setup of detection

- (a) Standing two walls in same direction.

- (b) Standing two walls in opposite direction (face target chamber in opposite site).

- (c) Standing with MMC far from beam line

- To do list from high priority

- Measuring pion and comparing deposit energy distribution with cosmic muon. (with simulation) <-setup (a)

- Tracking check btw MMC and TOF (can be done by cosmic ray (low intensity) <- setup (c)

Then move test with p-bar beam (with ETHZ or CEA)

- Measuring particles from anti-p decay and BG check (compare with simulation). <- setup (a)

- Beam monitoring (annihilation position check in the beam line). <- setup (b)?

TOF plan

- July : install second TOF wall and test the signal and HV tuning.
- August (with two students): Test with cosmic ray and p-bar beam.
 - Check the time delay between FADC modules.
 - Comparing signal of pion and muon and matching with simulation.
 - Checking possible background and understanding.
 - Take a Linac shift.
 - Test with MMC
 - Etc...