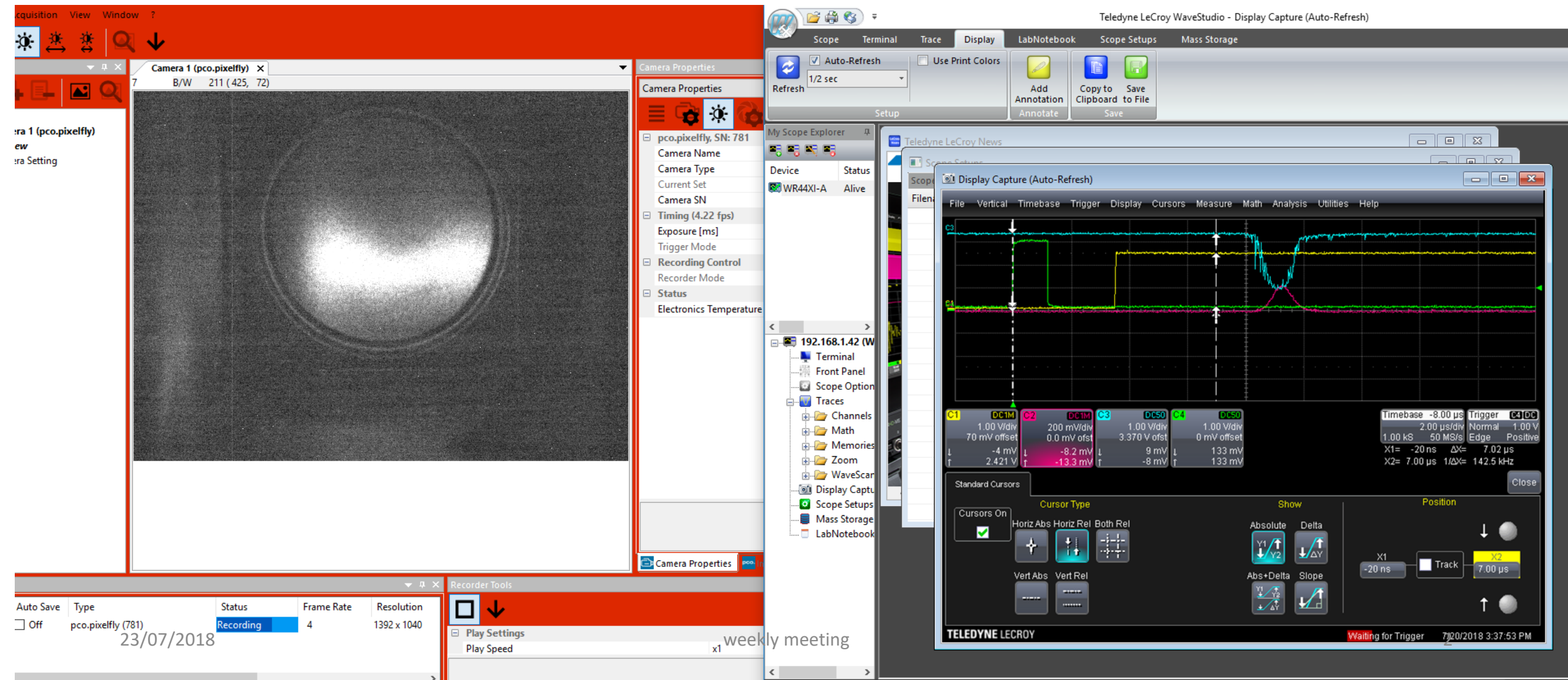


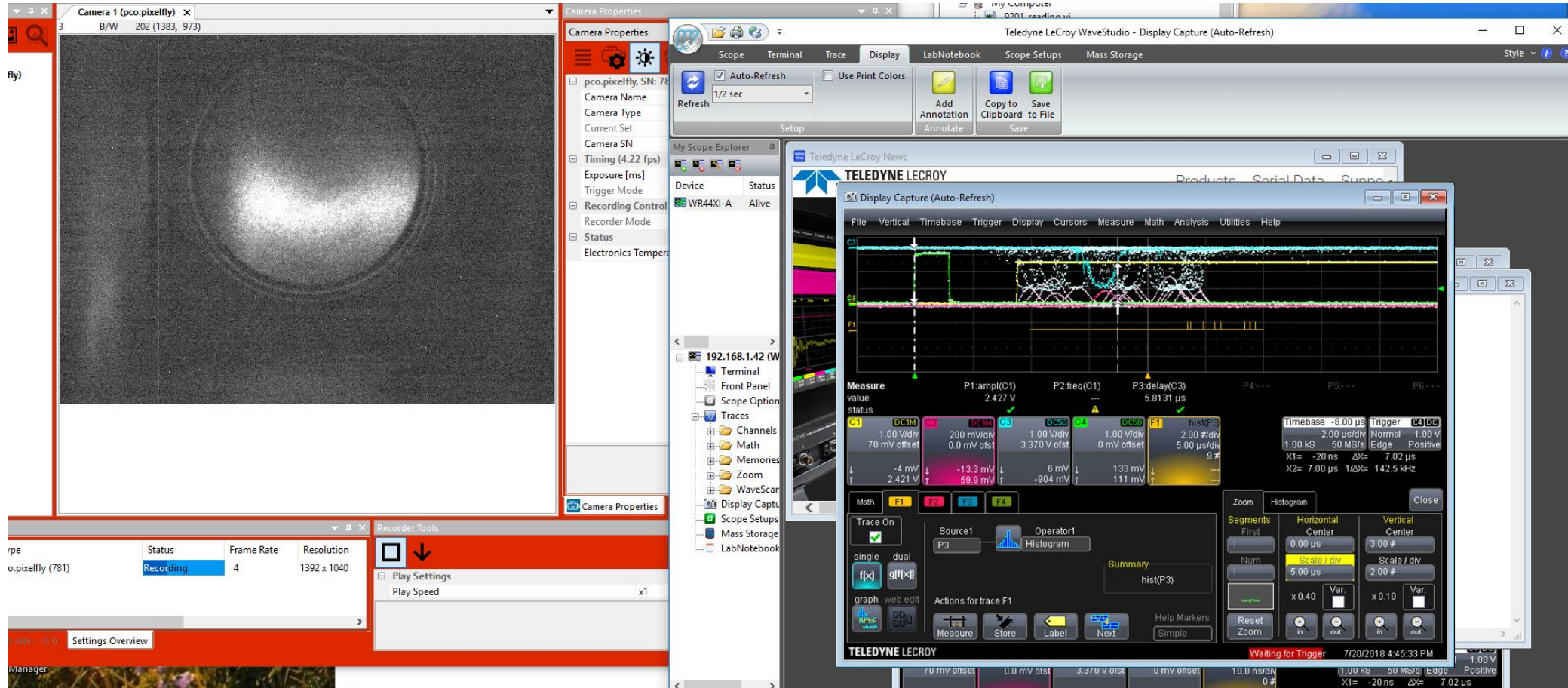
Weekly meeting

BongHo Kim

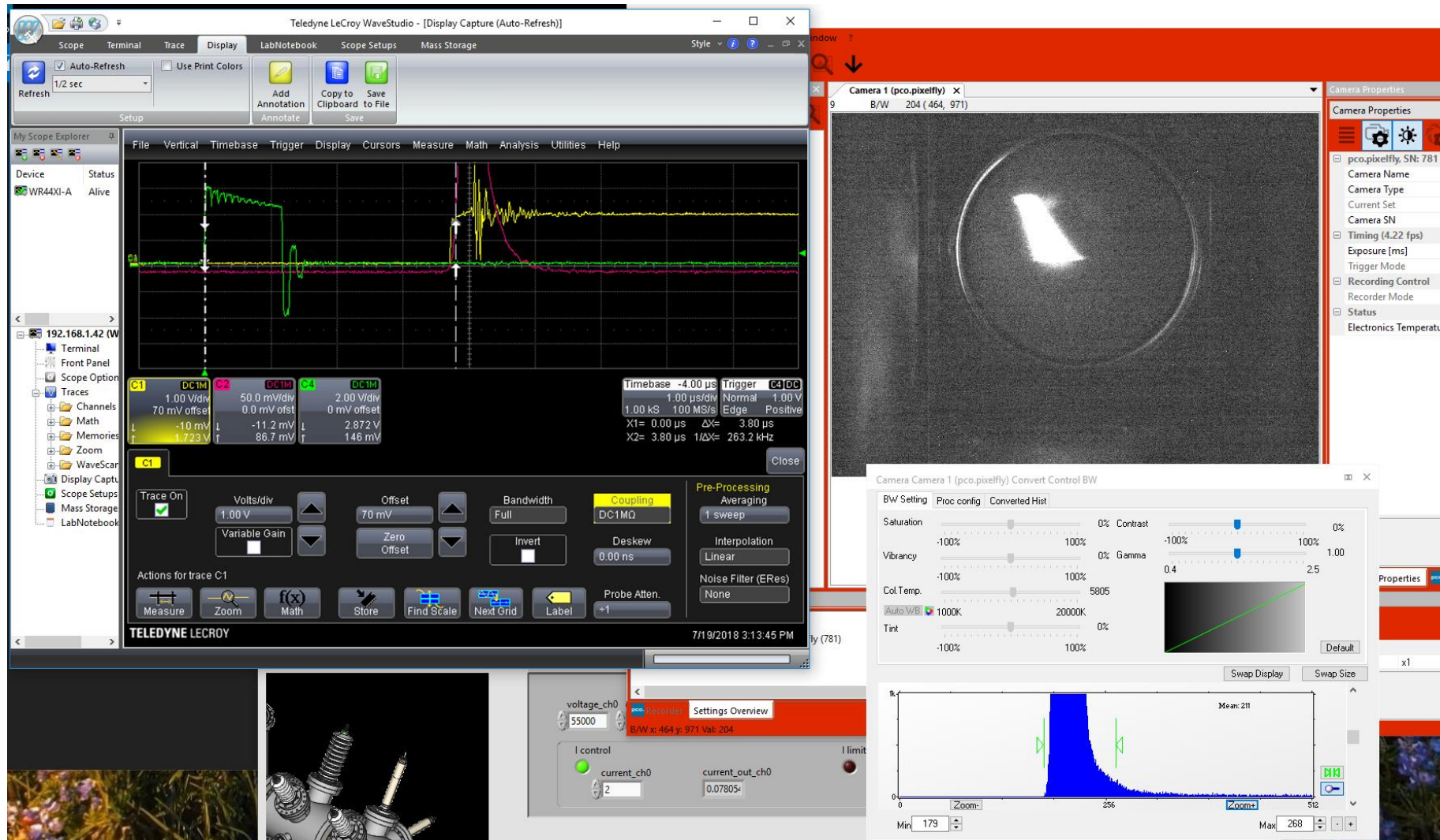
CERN status – pbar beam



CERN status – pbar beam (zitter problem)



CERN status – H- beam (focused?)



So

- Data was also taken by TOF during the anti-P beam test.
- Because of high beam intensity, TOF may need to move to further position.
- Delay generator will be prepared for deceleration scanning.

(I will also check possible port for TOF trigger (it's occupied by switch of decelerator and camera for MCP))