

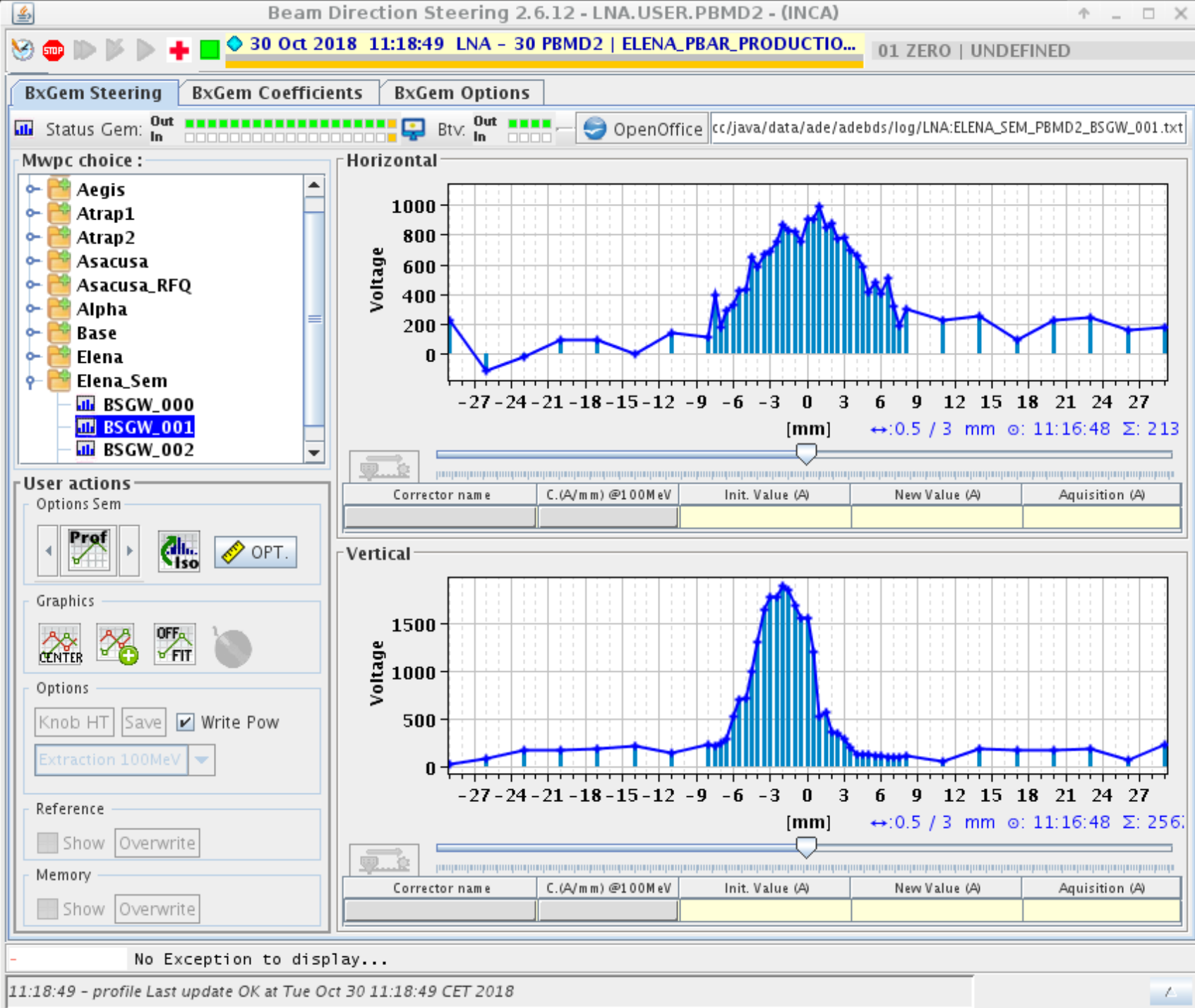
# Weekly meeting

SNU

Bongho Kim

# Beam time is over

- Three SEM was tested
- Beam tuning couldn't be done (couldn't send decelerated beam to the downstream)
- 100 keV beam with pinhole was used to take data for single event at MCP.
- Switchward test was done by 100keV beam
- Ps + p-bar test couldn't be managed by two problem
  - p-bar beam is bent when Riken trap is on.
  - Positron beam can't pass through by mis-alignment problem



First SEM

## BxGem Steering

## BxGem Coefficients

## BxGem Options

Status Gem: Out In Btv. Out In OpenOffice cc/java/data/ade/adebds/log/LNA:ELENA\_SEM\_PBMD2\_BSGW\_001.txt

## Mwpc choice :

- Atrap1
- Atrap2
- Asacusa
- Asacusa\_RFQ
- Alpha
- Base
- Elena
- Elena\_Sem
- BSGW\_000
- BSGW\_001
- BSGW\_002
- BSGW\_003

## User actions

## Options Sem



## Graphics



## Options

Knob HT Save ☒ Write Pow  
Extraction 100MeV

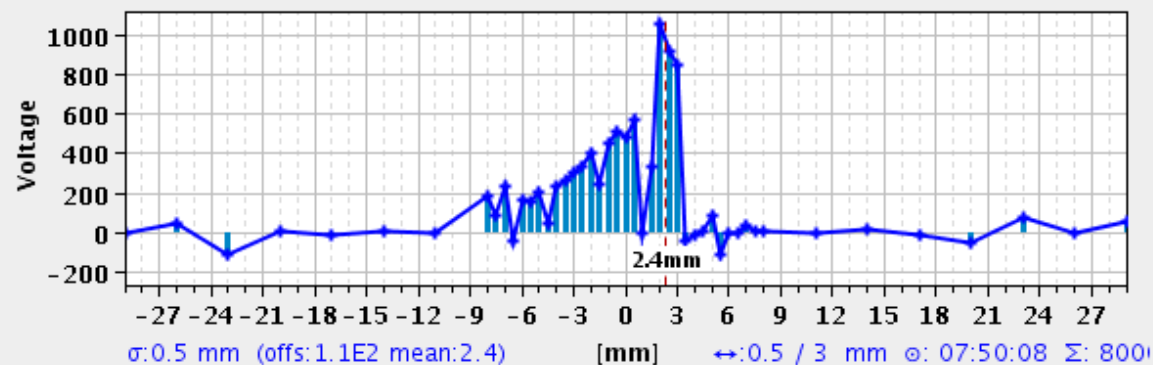
## Reference

Show Overwrite

## Memory

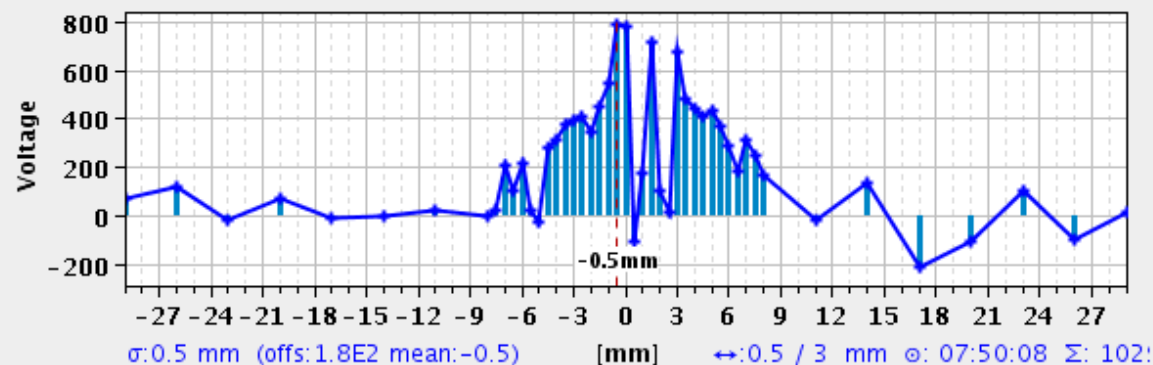
Show Overwrite

## Horizontal



Corrector name	C.(A/mm) @100MeV	Init. Value (A)	New Value (A)	Aquisition (A)

## Vertical

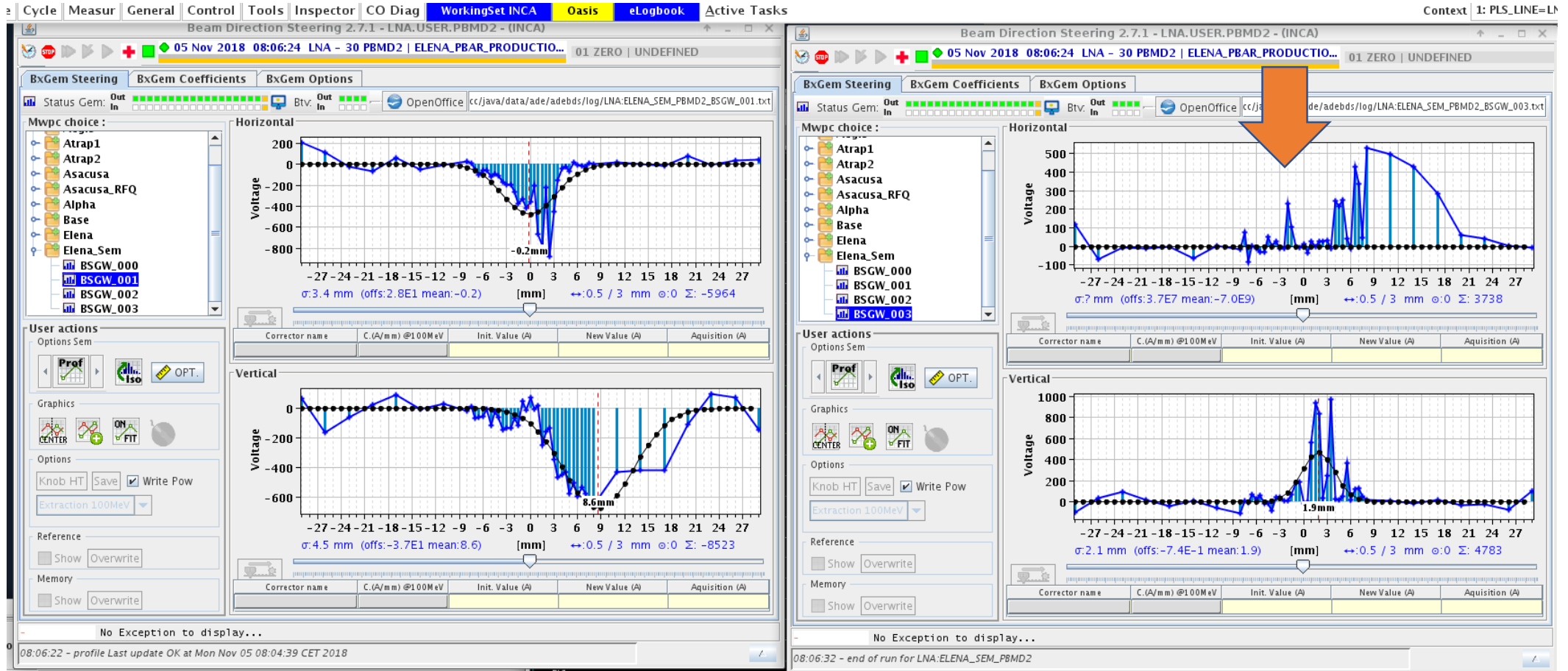


Corrector name	C.(A/mm) @100MeV	Init. Value (A)	New Value (A)	Aquisition (A)

Second SEM at correct position

No Exception to display...

# Third SEM shows mis-alignment



# Decelerated beam

