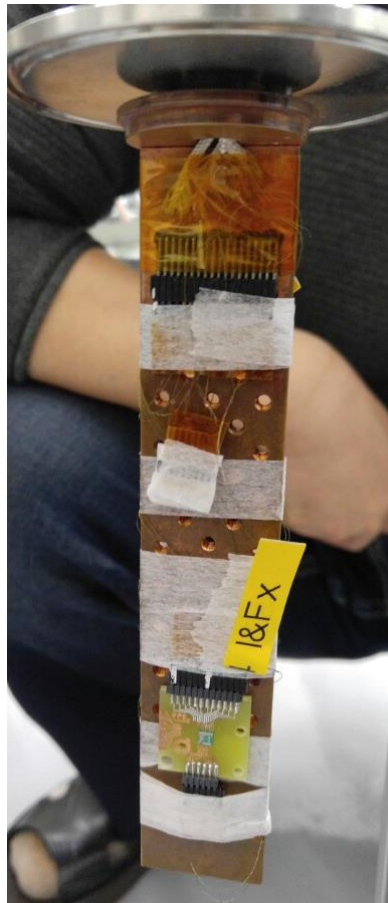
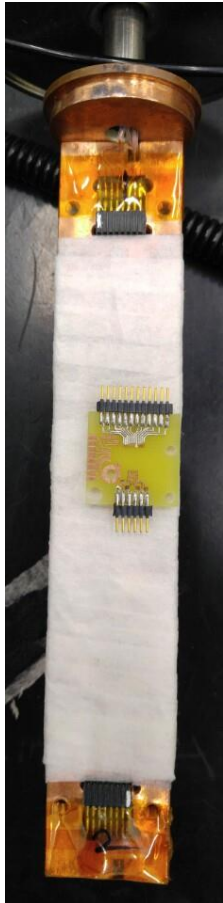


Weekly Report

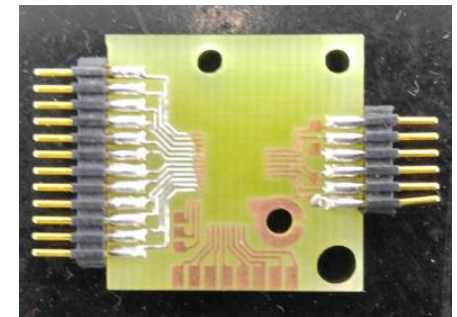
2018-06-25

Kim, Hanbeom

SQUID Chip Test Probe Improvement

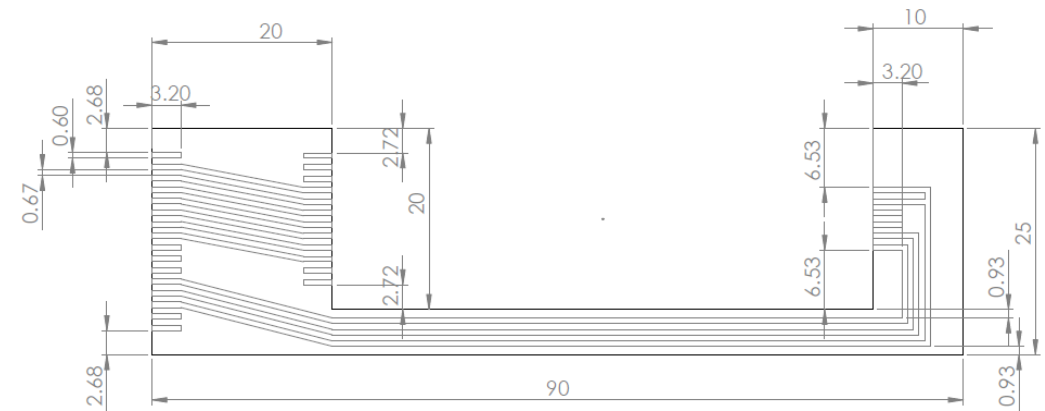
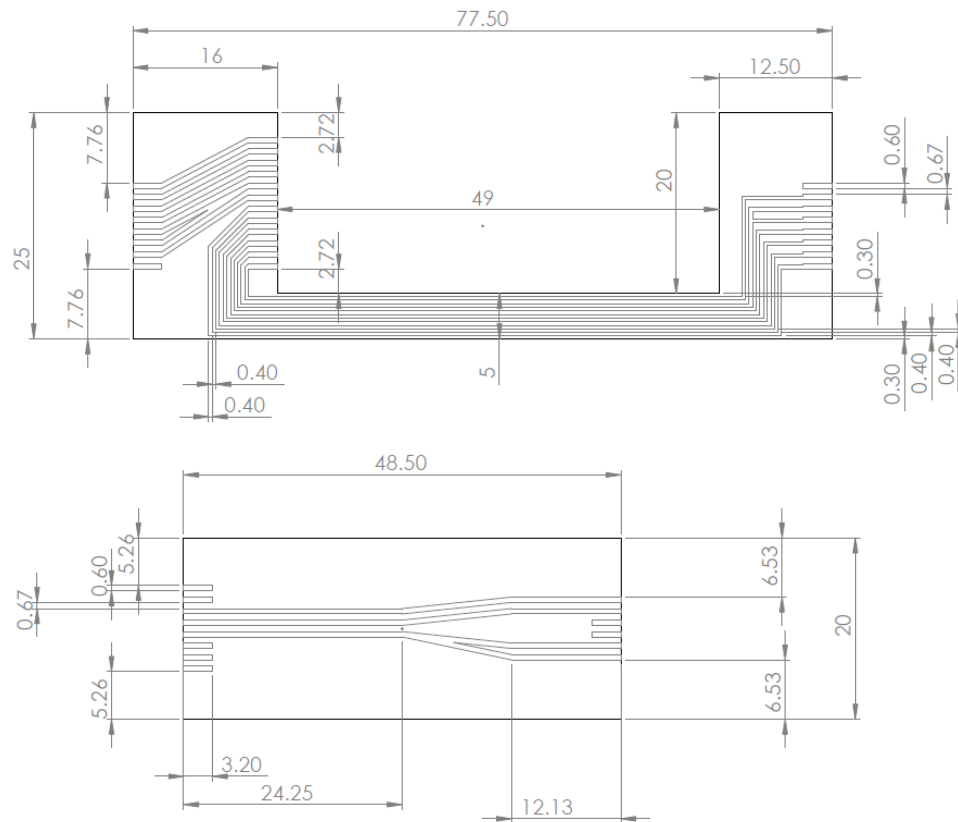


- The board is unoptimized.
- Complicated Wiring
 - The bonding breaks too easily.
- A new plan to develop a new connecting method
 - Replace wires with PCB boards
- The current SQUID chip board
 - $2 \times 2 \text{ cm}^2$, 12&6 pin



SQUID Test Probe Improvement

Adapter PCB (Printed Circuit Board) Design



There is the other idea to build an entirely new chip board.