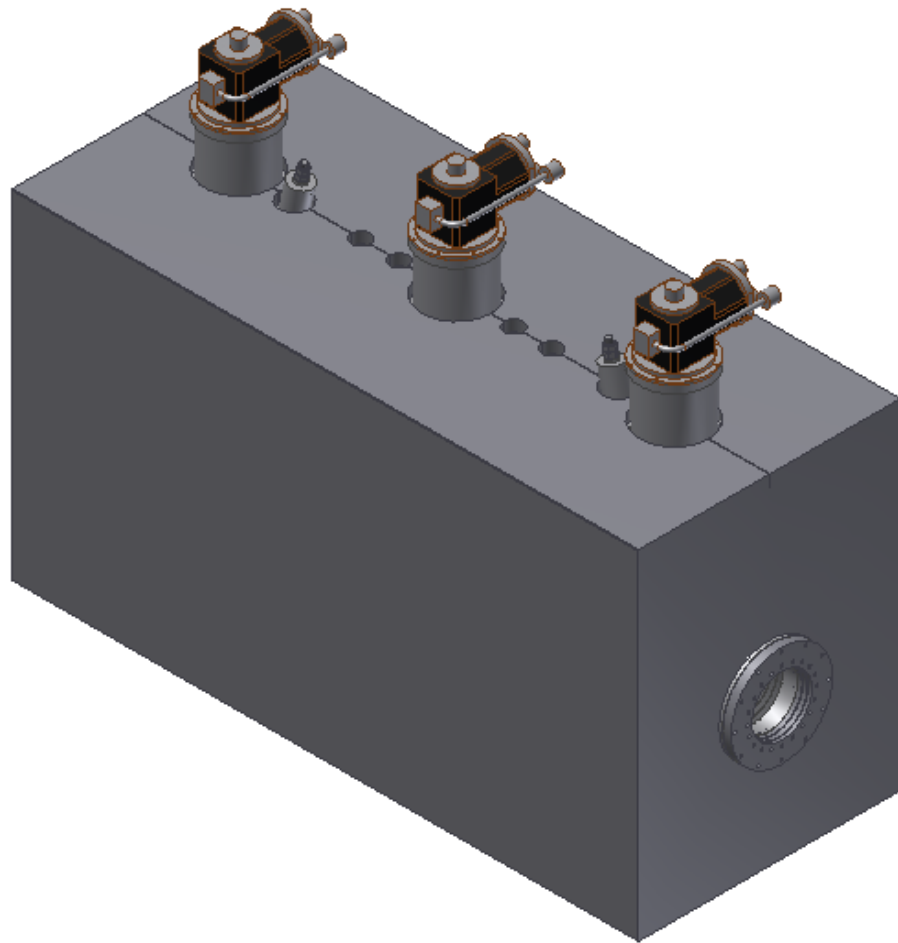


**KR TECH**  
주식회사 금론테크

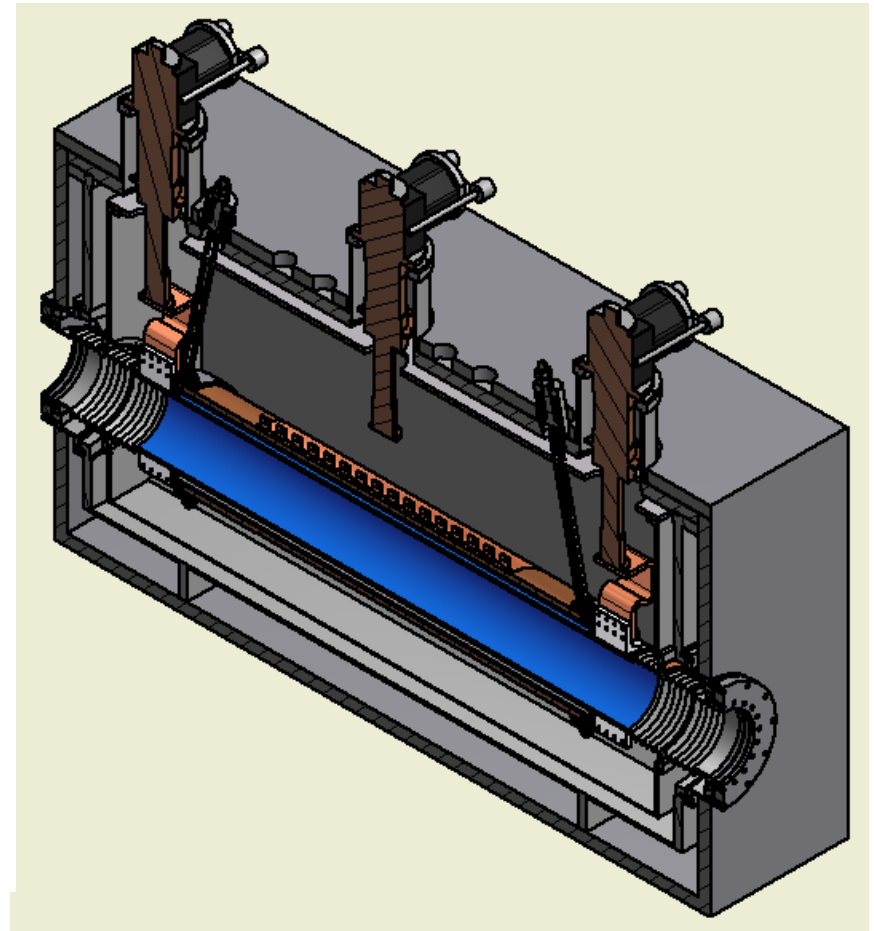
2017.02.10

정 연 대

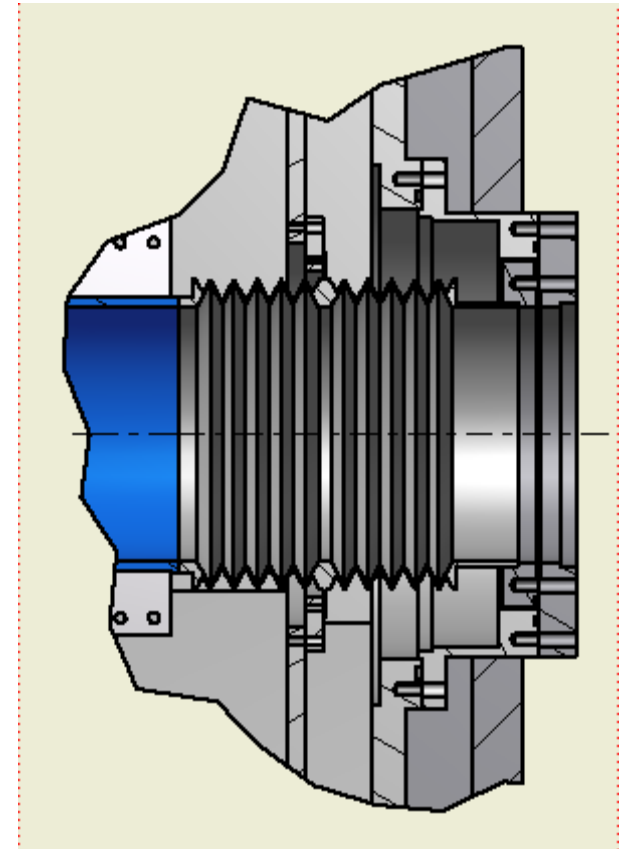
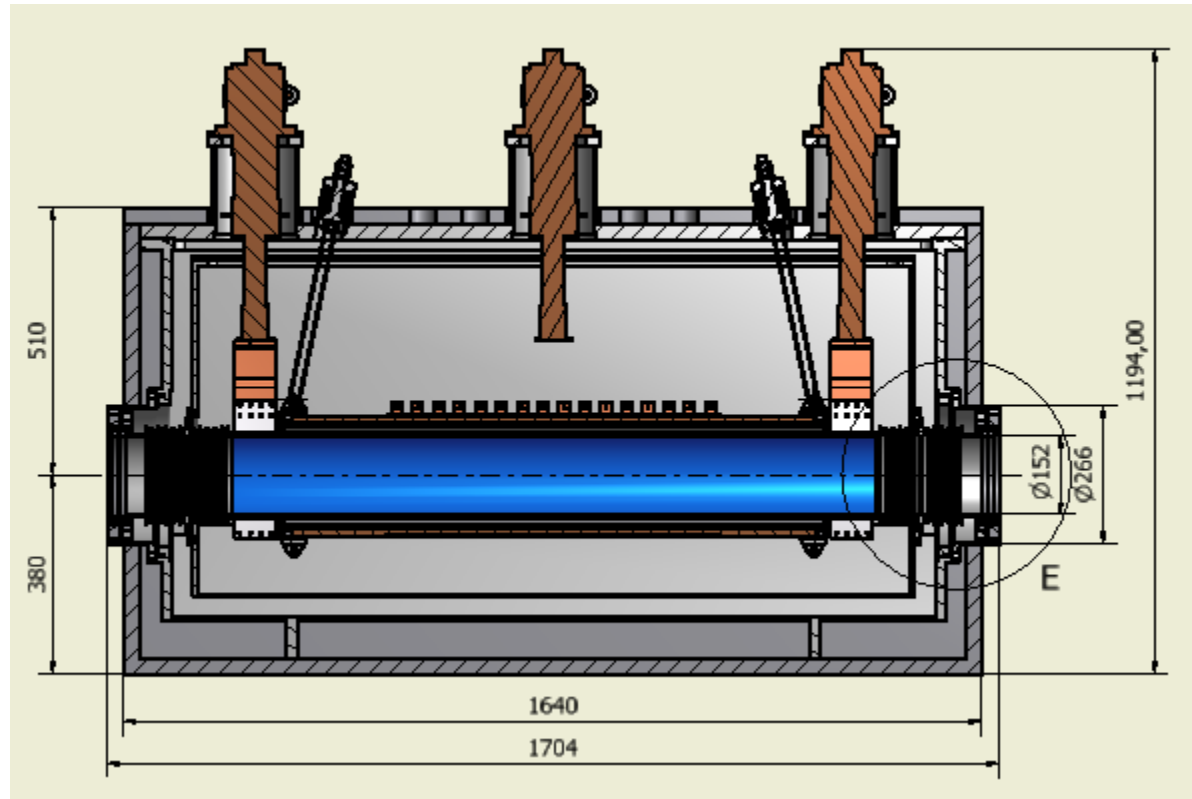
# Super conducting magnet



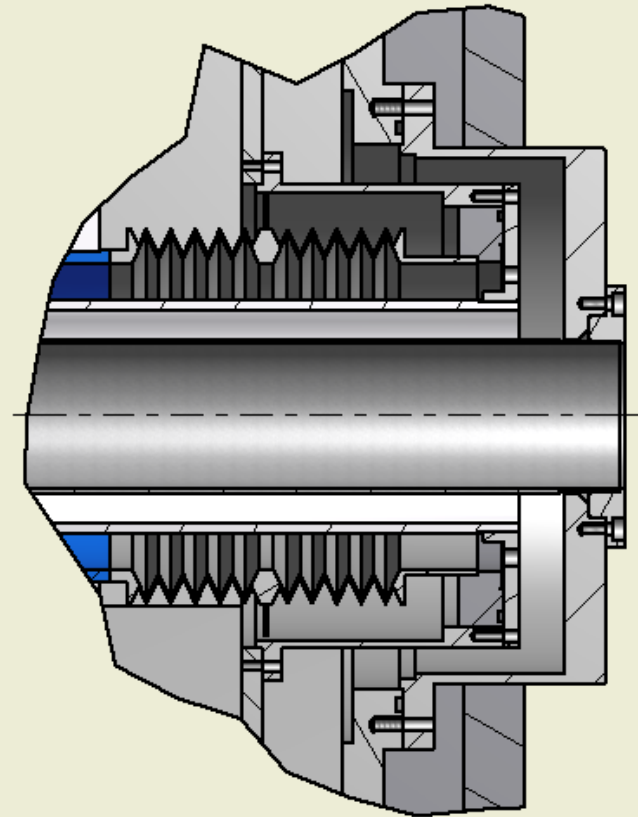
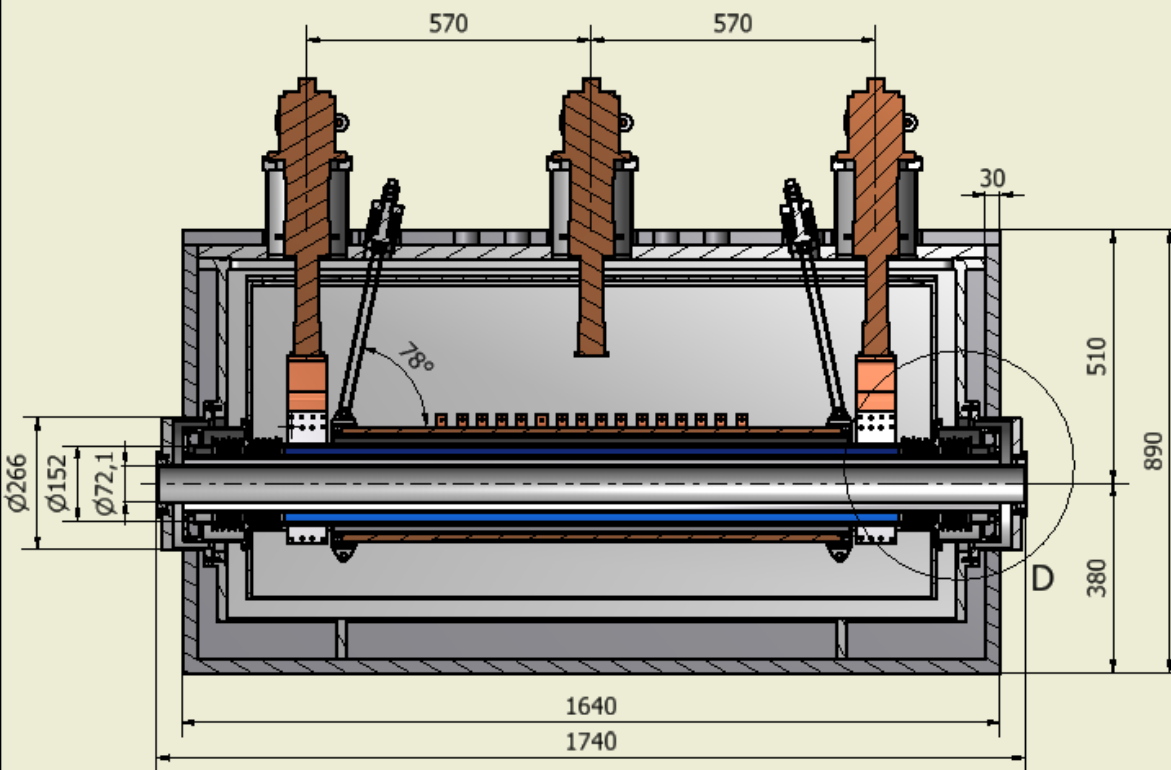
- Magnetic shield
  - Thickness : 30mm
  - Material : low carbon steel



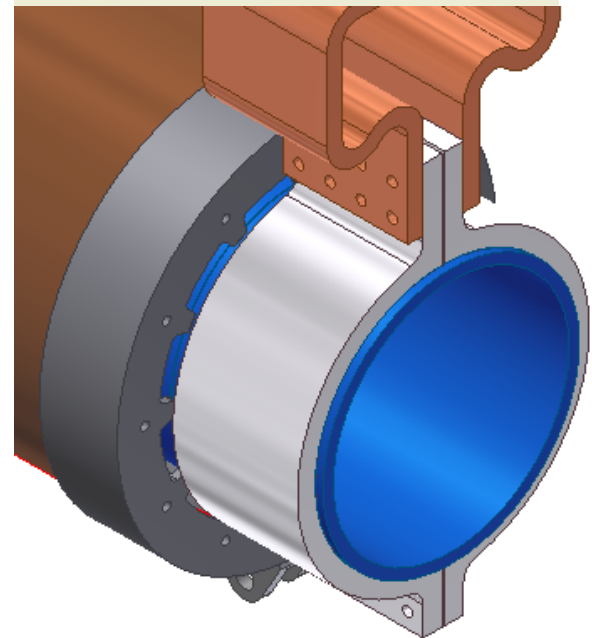
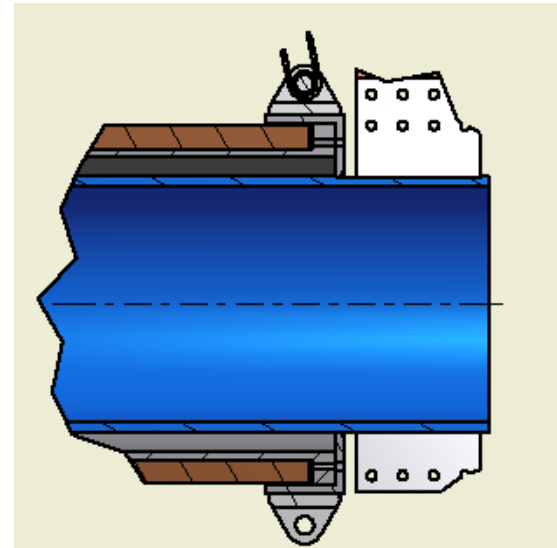
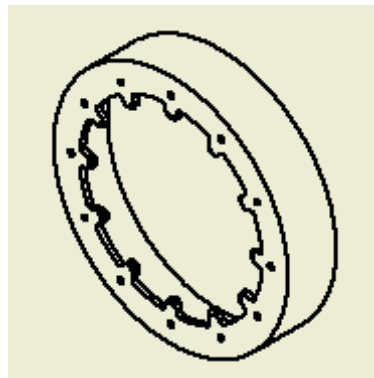
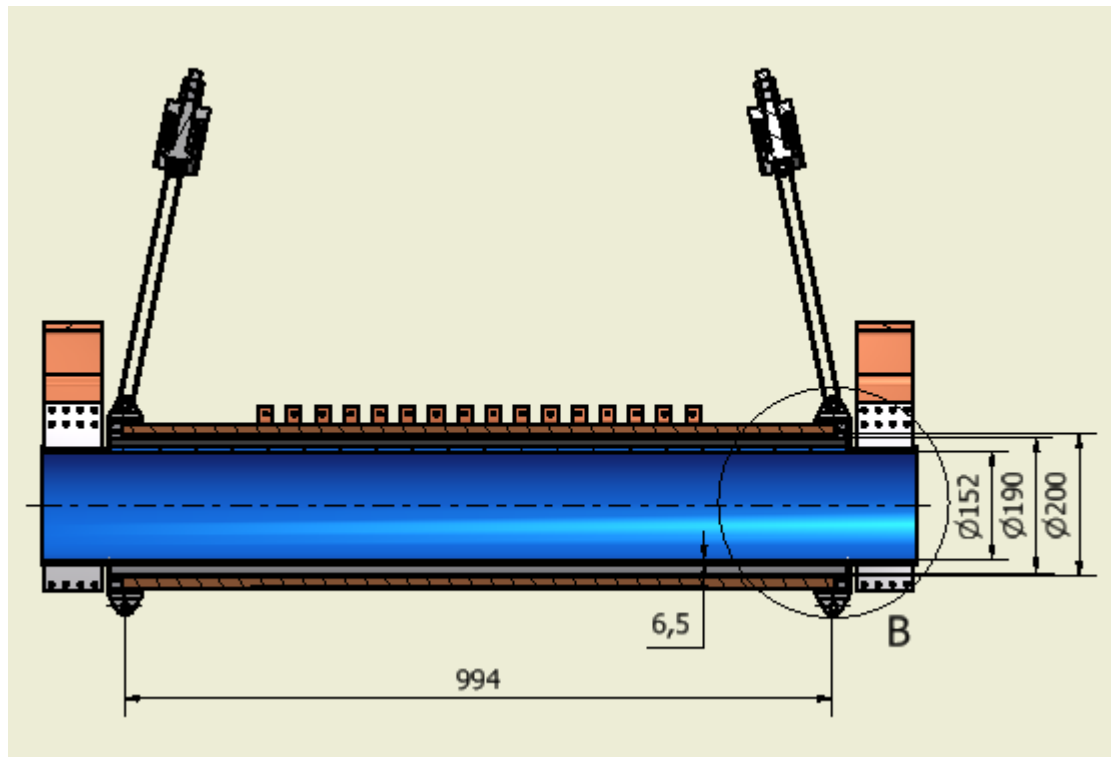
## Cold bore



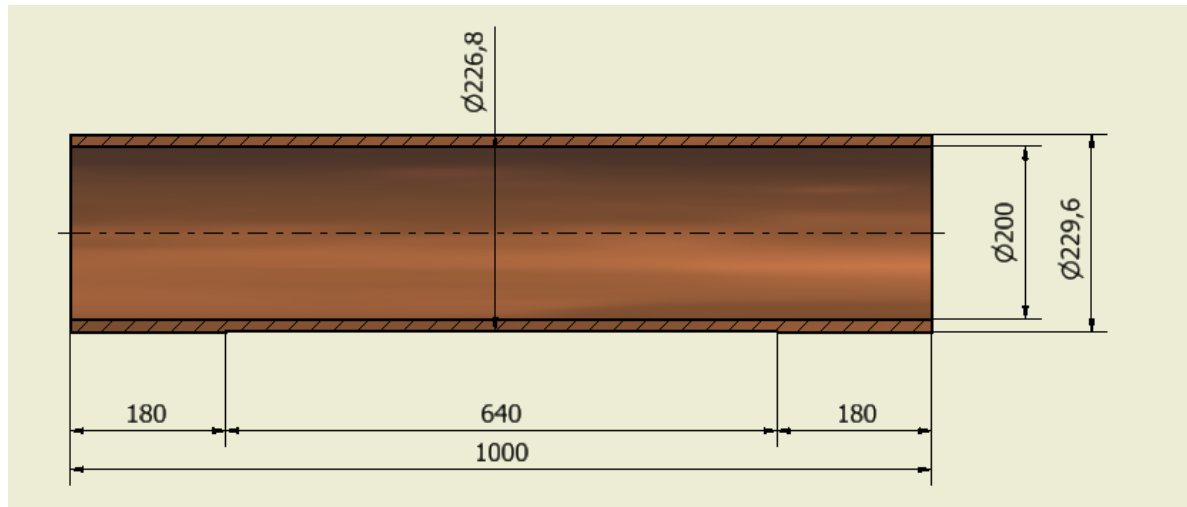
# Center warm bore



## 코일과 저온보어 연결

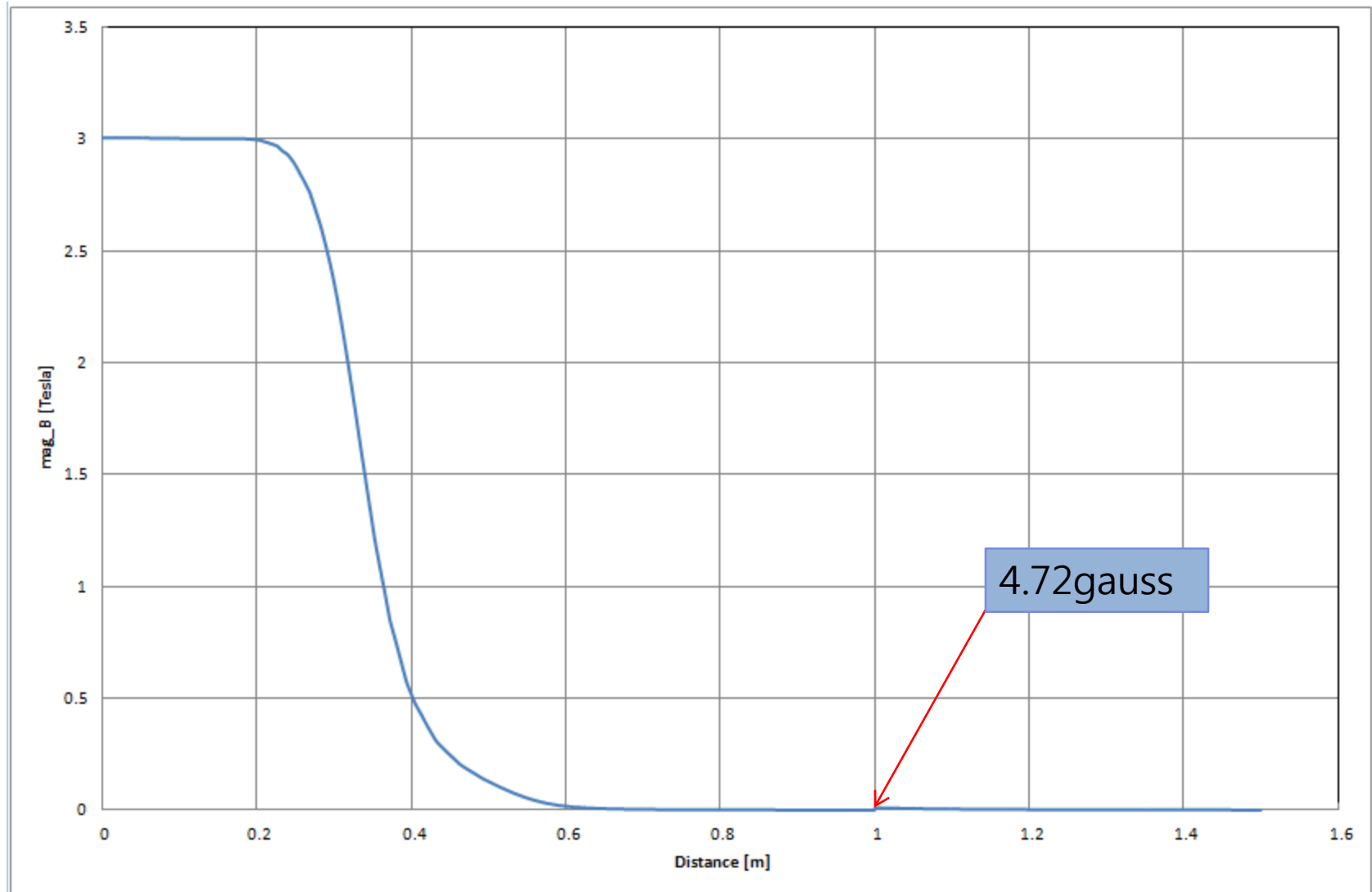


# Coil

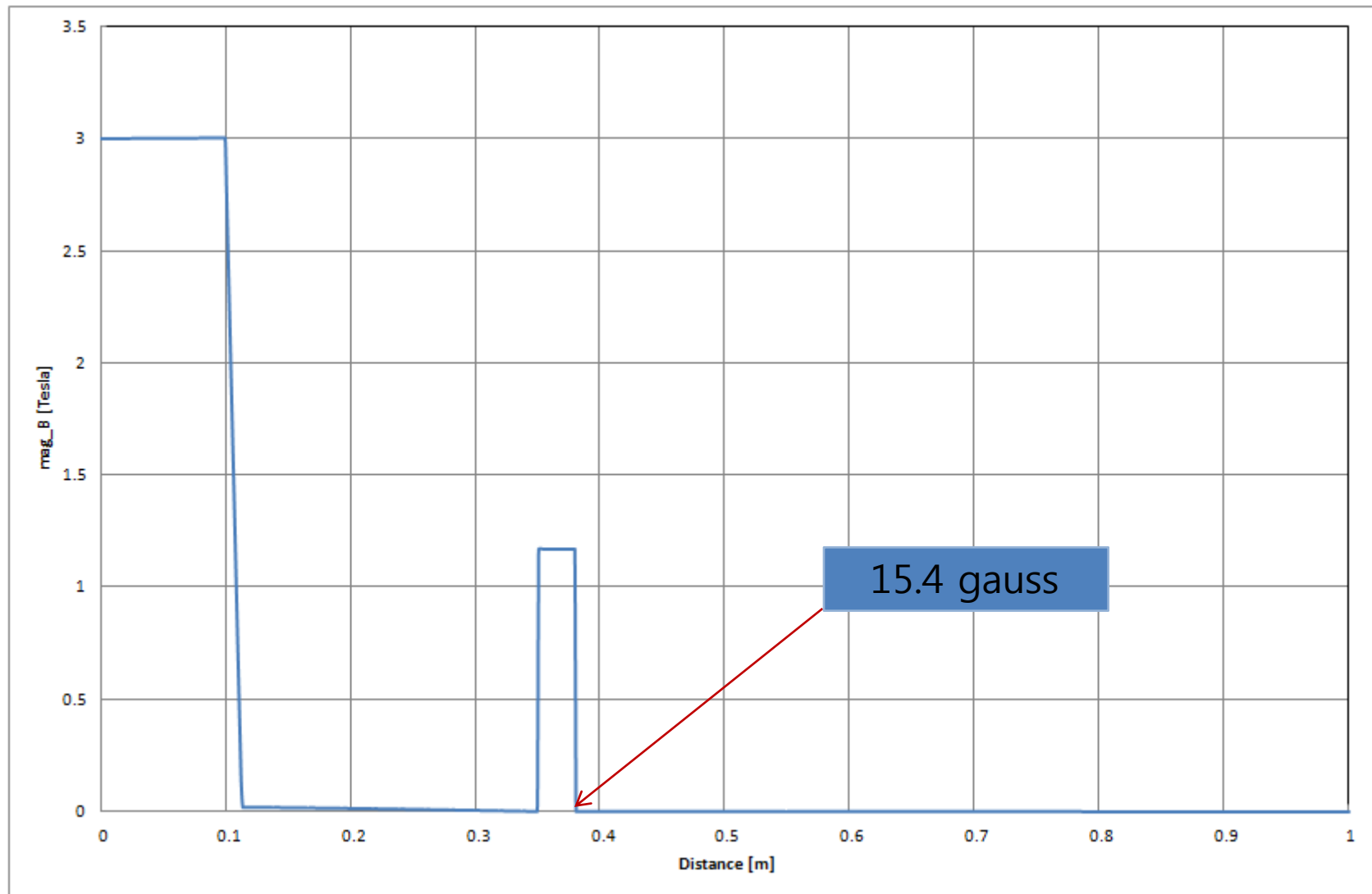


항 목	해석 결과
Magnetic field at center	3T
Uniformity ( Axial : 500mm )	$\pm 0.1 \%$ 이하
Coil ID	200mm
Coil Length	1000mm
No of turn	26476
Current	95 A
Conductor(NbTi)	$\varnothing 0.77$ (with insulation)
Conductor Length	17.8km
Inductance	27.36 H

## 축방향 자기장 분포



## 반경방향 자기장 분포





***Thank you very much  
for your attention!***