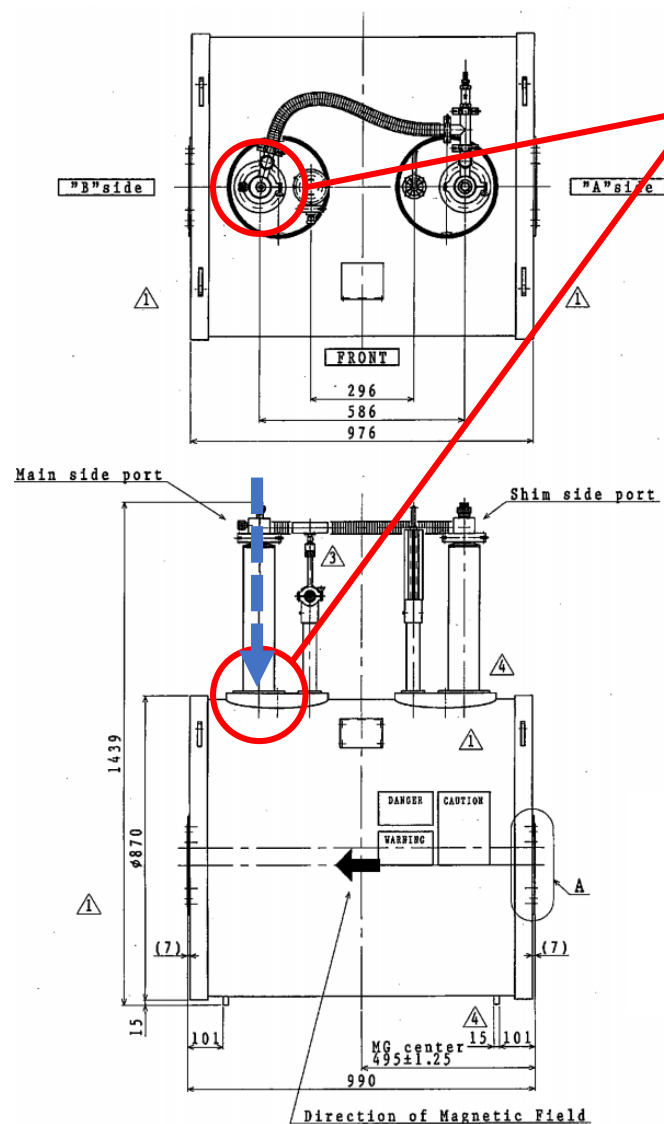


Neck of He Vessel



Check this region with endoscopy camera



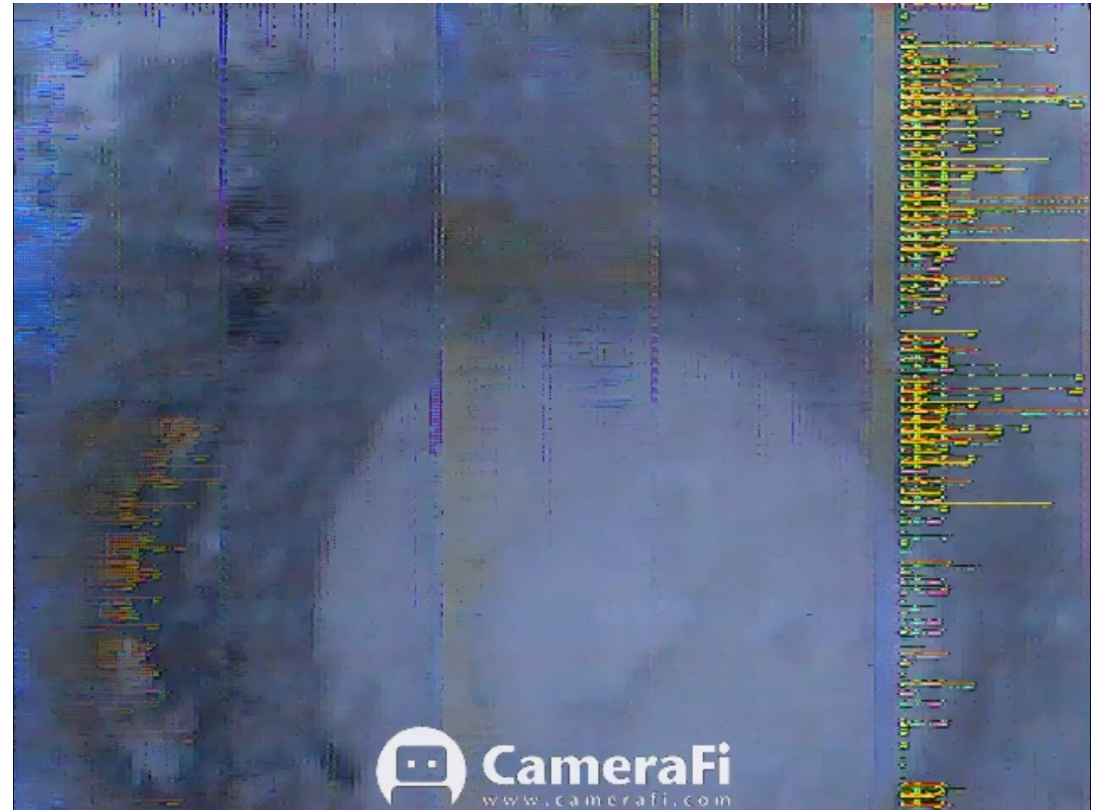
<Expectation>

He Sensor Hole

Neck of He Vessel

Main Lead Connector

Neck of He Vessel



De-Icing Neck

To un-block a badly iced up neck proceed as follows.

- 1) Obtain a source of pure helium gas (99.9%) a cylinder gas with regulator is normal. Care if it is magnetic.
- 2) Connect a rubber or neoprene hose from the helium gas supply to the blow out tube and initiate a gentle flow of gas.
- 3) Remove the plug from the entry port on the neck and lower the end of the blow out tube into the neck with the gas flow on.
- 4) Gradually lower the tube until you feel the resistance of the ice-plug. Note that there will be a substantial flow of cold gas back out of the same neck so care must be taken.
- 5) Push the end of the tube into the ice-plug and feel for it gradually moving in further as the ice evaporates. If necessary increase the gas flow. It may take 5 or 10 minutes to completely de-ice the neck depending on the severity of the blockage.
- 6) At some point the tube will break through the ice-plug, this will easily felt. **CARE WHEN THIS HAPPENS: A SUDDEN RUSH OF COLD GAS IS LIKELY.**
- 7) Play the gas around the neck where the ice had formed to clear all of it before removing the tube and sealing the entry port with the plug.